

# EAGLE EYE SUMMER CAMP

MAY 18TH - JULY 31ST



(385) 777-1579

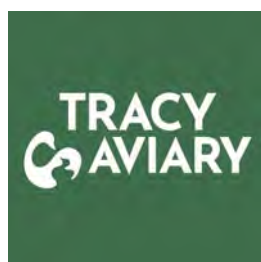


EAGLEEYE@LCAEAGLE.ORG





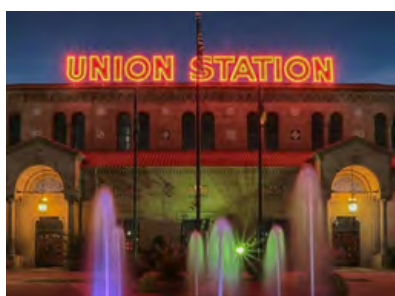
# EAGLE EYE COMMUNITY PARTNERS



mobile ed  
productions, inc.



NINJA  
WAREHOUSE



# Are you ready for an unforgettable summer adventure?

Look no further than Eagle Eye Summer Camp! This amazing camp was started back in 1995 and has been serving kids from all over Northern Utah ever since. At Eagle Eye, kids ages 3-14 can have the time of their lives while **learning new skills**, making new friends, and **creating memories** that will last a lifetime. Whether you're a budding artist, an outdoor enthusiast, or just love to have fun, Eagle Eye has something for everyone.

Each day at camp is packed full of exciting activities that will keep you on your toes from start to finish. You'll have the chance to **explore** the great outdoors, create amazing **crafts**, play fun games, and learn new skills in a safe and supportive environment.

But what sets Eagle Eye apart is the **amazing staff**. Our counselors are friendly, caring, and committed to making sure that every camper has a **summer they'll never forget**. You'll be in good hands with our experienced team, who will be there to guide you every step of the way.

*"My children had an amazing time at Eagle Eye Summer Camp!*

*They loved the field trips and making new friends."*

*- Sarah S.*

**SCAN ME  
TO REGISTER**



# Eagle Eye Fast Facts

**Age Range** 3 Years Old to 7th Grade

**Dates** May 18th – July 31st (11 weeks)

**Camp Hours** 9:00 A.M. – 4:00 P.M.

**Drop Off** 8:30 A.M. – 9:00 A.M.

**Extended Care (AM)** 6:30 A.M. – 9:00 A.M.

**Extended Care (PM)** 4:00 P.M. – 5:30 P.M.

**Location** 2352 E Highway 193, Layton, UT 84040

## Enrichments

Enrichment Classes are a great way to make your summer even more exciting and engaging! These two-hour sessions, held on Mondays, Tuesdays, and Wednesdays, allow campers to explore a specific interest or skill, fostering growth and learning in a fun and creative way.

## Field Trips

Field Trips offer campers the chance to venture beyond the camp's regular facilities to explore exciting locations or events. Designed to be both fun and enriching, these outings provide children with the opportunity to experience something new and different.

## Disclaimers

- All Campers must be potty trained and able to take care of their own restroom needs
- All Campers must purchase an Eagle Eye lunch or bring their lunch daily, microwaves are available
- There will be no camp on federal holidays (Memorial, Independence, and Juneteenth)

## Required Items

- (Preschool Only) Blanket & pillow for nap time. Stuffed toy authorized.
- Sunscreen with child's name on it
- Water bottle with child's name on it
- Extra change of clothes for accidents
- (Fridays) Towel, swimwear, water shoes
- (If Required) Medication for the front office staff to manage

## Optional Items

- Sunglasses and/or Hat
- (Tuesdays) Blanket and pillow for Movie Day
- Extra snacks



Register today  
to give your  
child a summer  
they'll never  
forget!

# Sample Schedule

The schedule below represents a typical day for a camper. Please note that rotations and times may vary depending on the day's activities (e.g., in-house field trip, water day, etc.).

**6:30 AM – 8:30 AM** Extended Care (AM)

**8:30 AM – 9:00 AM** Camper Drop-Off

**9:00 AM – 9:15 AM** Good Morning | Circle Time

**9:15 AM – 10:00 AM** Playground

**10:00 AM – 10:30 AM** Restrooms/ Snack Time

**10:30 AM – 11:15 AM** Camp Activity

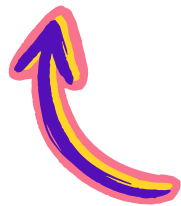
**11:15 AM – 12:00 PM** Lunch

**12:00 PM – 12:45 PM** Playground / Restrooms

**1:00 PM – 2:30 PM** Nap Time

**2:30 PM – 4:00 PM** Camp Activity

**4:00 PM – 5:30 PM** Extended Care (PM)



**Preschool**



**Kindergarten through  
7th Grade**



**6:30 AM – 8:30 AM** Extended Care (AM)

**8:30 AM – 9:00 AM** Camper Drop-Off

**9:00 AM – 9:15 AM** Morning Connect

**9:15 AM – 10:15 AM** Art

**10:15 AM – 11:15 AM** STEM

**11:15 AM – 1:00 PM** Lunch/Playground

**1:00 PM – 2:00 PM** Indoor Gym Time

**2:00 PM – 3:00 PM** Technology

**3:00 PM – 4:00 PM** Countries

**4:00 PM – 5:30 PM** Extended Care (PM)



# Daily Activities

The list below outlines the daily activities your camper will participate in, all of which are designed to align with the weekly theme of our summer camp.

## Art

In art class, campers will explore painting, drawing, and hands-on projects. They'll express their creativity, develop new skills, and collaborate on group art.

## STEM

In STEM class, kids will dive into fun science, technology, engineering, and math projects. They'll build, conduct experiments, solve puzzles, and explore the wonders of the world through hands-on learning. Creativity and teamwork are key as they tackle exciting challenges!

## Technology

In technology class, kids will explore the world of coding, robotics, and more! They'll learn to build simple games, create animations, and solve tech challenges while developing problem-solving and creativity skills.

## Countries

In culture class, kids will explore the diverse traditions, art, music, and languages from around the world. Through interactive activities and hands-on projects, they'll gain a deeper understanding of different cultures while celebrating global diversity.

## Gym

In indoor gym class, kids will stay active and have fun with games, obstacle courses, and fitness challenges. They'll improve strength, coordination, and teamwork through exciting, energy-filled activities in a safe and supportive environment.



# FUN EVENTS!



## In-House Field Trips

Get ready for an unforgettable summer of exciting and educational in-house field trips that are sure to spark curiosity and fun!

- **Creature Encounter:** Get up close and personal with amazing reptiles and discover the wonders of the animal kingdom!
- **SkyDome Traveling Planetarium:** Prepare to be amazed as we journey through the stars and explore the wonders of the night sky.
- **Loveland Aquarium:** Dive into an underwater adventure as we meet fascinating animals from the rainforest.
- **The Traveling Treehouse:** Take part in an interactive "participatory" event that brings the magic of storytelling to life!
- **MadScience:** Get hands-on during our sensory week with a thrilling "make and take" science experiment that will spark your imagination!

**Best of all, in-house field trips are all FREE with your package, so there's no additional cost!!**

## Field Trip Excursions

Get ready for some awesome off-campus adventures this summer! Our excursions take you to cool spots like testing your skills at **Ninja Warehouse**, discovering the wonders of space at **Clark Planetarium**, hanging out with animals at **Hogle Zoo**, exploring ocean life at **Loveland Aquarium**, and so much more!

The best part? You get to choose which ones you want to go on! So, join us for some unforgettable experiences, tons of fun, and memories that will last a lifetime!

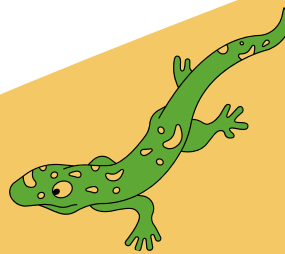
*Note: Extra fees apply for off-campus excursions.*

**NINJA  
WAREHOUSE**

**LOVELAND LIVING PLANET  
AQUARIUM**

**CLARK  
PLANETARIUM**

**Utah's  
HOGLE  
ZOO**



# SPECIAL ACTIVITIES EACH DAY

Every day, our whole camp comes together for an awesome activity! These exciting activities are the perfect way for campers to have fun, stay active, and make lasting memories together. With a fresh mix of activities each week, we make sure there's something for everyone. From thrilling outdoor adventures and movies on the big screen to splashy water fun, there's always something exciting happening at Eagle Eye Summer Camp!

## MONDAY



### Off-Campus Park Day

Pre-K and K stay on-campus

## TUESDAY



### Movie on the Big Screen

## WEDNESDAY



### In-House Field Trips

## THURSDAY



### Camp Activity

## FRIDAY



### Water Day

\*\*Pool Day (Optional)\*\*  
for 4th-7th Graders



# Enrichments

Get ready for an action-packed summer! Our sports enrichment program focuses on building skills, teamwork, and confidence through a variety of exciting activities like **soccer, basketball, cheerleading**, and more. Campers will improve their athletic abilities while having a blast with friendly competitions, drills, and games. It's the perfect blend of fitness, fun, and sportsmanship!



**Football** – Your camper will learn the fundamentals of the game from LCA's state-winning varsity head football coach, Ray Stowers, all while enjoying a fun and safe environment to play and practice!



**Cheerleading** – Jump, shout, and cheer! In this exciting program, campers will learn the fundamentals of cheerleading, including jumps, cheers, and routines. They'll build teamwork, confidence, and have a blast!



**Soccer** – Your camper will learn the fundamentals of this fast-paced sport from a team of experienced coaches and players, all while enjoying a fun and safe environment to practice and play!



**Basketball** – Campers will develop key basketball skills like passing, shooting, and teamwork through fun drills and mini-games. Perfect for players of all levels, this program builds confidence and passion for the game!



**Karate** – Campers will have the chance to learn and refine their karate skills under the guidance of an experienced black-belt instructor, starting their exciting journey toward becoming karate masters!

- Enrichments are held on **Mondays (Football and Cheerleading), Tuesdays (Soccer), and Wednesdays (Karate and Basketball)**
- Campers will be grouped into either a **K-3rd group** or a **4th-7th group**
- Campers are pulled from daily camp activities to attend enrichments
- Enrichments are 2 hour sessions

# Extended Care

## Extended Care Hours and Cost:

- Extended Care A.M. (6:30 AM to 9:00 AM) costs \$10 per day
- Extended Care P.M. (4:00 PM to 5:30 PM) costs \$10 per day
- Extended Care A.M and P.M sessions together cost \$20 per day
- Late pickups will incur a fee of \$2 per minute. Campers must be picked up promptly by 5:30 PM.

## Extended Care Program:

- Extended care is available for campers before and after regular camp hours and is not a part of the regular summer camp program and may not include all of the same activities or amenities.
- Parents are responsible for dropping off and picking up campers at the designated times
- Campers will be supervised by our staff and may participate in a variety of activities

## Enrollment:

- On the Parent Dashboard, you can enroll your camper for Extended Care either:
  - All Summer
  - Weekly
- For Weekly Enrollments, you will select the number of AM and/or PM sessions you require. After you select the quantity needed, you will select which dates and times are needed.



# EAGLE EYE LUNCH



**Mondays** - Chicken Nuggets, Mac & Cheese, & Milk

**Tuesdays** - Turkey Sandwich, Chips, String Cheese, Fruit Snack, & Milk

**Wednesdays** - Cheese Quesadilla, Celery, Fruit, & Milk

**Thursdays** - Peanut Butter Jelly Sandwich, Chips, String Cheese, Fruit Snack, & Milk

**Fridays** - Pizza (2 slices), Celery, & Juice/Milk

Eagle Eye campers have the convenience of purchasing lunch, just like the school hot lunch program many are familiar with. It's a hassle-free option that ensures your child enjoys a delicious, balanced meal without the need to pack lunch every day!

Campers are welcome to bring their own lunch. We have microwaves available, but kindly ask that food items require no more than 1 minute to heat, as there are limited microwaves and a large number of campers during lunchtime.

## How to Purchase a Lunch

1. During initial enrollment, you can add a lunch as a "camp extra" when checking out. This is optional and not required.
2. Lunch purchases must be made on the Wednesday before the enrolled week of camp. For instance, if the camper starts on Monday, May 18th, then the order needs to be submitted Wednesday, May 14th.

## Forgotten Lunches

1. Last chance purchases can be made; however, orders need to be submitted at the front desk no later than 9:05 A.M. on the day of the request. The camper will be billed electronically through the Parent Dashboard.
2. If a child does not have a lunch, a lunch will be provided and the parent/guardian will be billed electronically through the Parent Dashboard.

**ALL SUMMER**  
**\$316**

**\$6 / DAY**

**SELECT LUNCH AS AN "EXTRA"  
DURING ENROLLMENT PRIOR  
TO CHECKOUT**

# FIND YOUR PERFECT PACKAGE:



## DAY CAMP ONLY

**\$1,905** All Summer

**\$205** 5 DAYS/WEEK

**\$199** 4 DAYS/WEEK

**\$172** 3 DAYS/WEEK

**\$125** 2 DAYS/WEEK

**\$65** 1 DAY/WEEK



## EXTENDED CARE AM/PM

**\$520** All SUMMER  
AM OR PM

**\$1,040** ALL SUMMER  
AM AND PM

**\$10** PER DAY FOR AM OR  
PM SESSION

**\$20** PER DAY,  
BOTH AM AND PM  
SESSION TOGETHER



## ENRICHMENTS

**\$220** 1 Enrichment  
All Summer

**\$50** 5 ENRICHMENTS/WEEK

**\$48** 4 ENRICHMENTS/WEEK

**\$45** 3 ENRICHMENTS/WEEK

**\$32** 2 ENRICHMENTS/WEEK

**\$20** 1 ENRICHMENT/WEEK

**FIELD TRIPS** **\$30** PER FIELD TRIP

**POOL DAYS** **\$70** ALL SUMMER

**\$10** PER POOL DAY

**ONLY \$2,268**

Complete **11-week**  
camp experience **with**  
lunch included!

# Disclosures and Costs

## Enrichment Disclosures

- All campers, kindergarteners, and older, who have an interest in and the ability to benefit from an enrichment course may enroll, provided they are age-appropriate. The instructor will provide the necessary course supplies unless otherwise stated in the class description.
- Enrollment is limited, so early registration is recommended. If course requests exceed available spots, applicants will be placed on a waiting list.

## Field Trip Disclosures

- Each field trip costs \$30. This is to cover travel costs, sponsor-provided special activities, group fees, etc.
- Enrollment is limited, so early registration is recommended. If course requests exceed available spots, applicants will be placed on a waiting list.

## Payment and Refunds

- Payments must be made by the Wednesday prior to the scheduled enrichment.
- There is a \$98 one-time registration fee per camper
- A \$20 late fee will be assessed if payment is not received by Friday prior to the scheduled enrollment week.
- A \$30 fee will be charged for returned checks.
- Refunds must be requested in writing to **[eagleeye@lcaeagle.org](mailto:eagleeye@lcaeagle.org)**.

## Other

- Eagle Eye Camp reserves the right to cancel classes due to insufficient enrollment or administrative reasons. If a course is canceled, a full refund will be issued. In the event of inclement weather or schedule changes with external vendors, alternative activities may be offered.
- Eagle Eye Camp reserves the right to add fees for attorney fees, court costs, collection agency fees, and commissions, and charges up to 50% of the account balance for delinquent accounts turned over for collection.
- If you need to withdraw from a week of camp or class, you must notify the office no later than the Wednesday before the week you cancel. Failure to do so will result in being charged the full amount for that week.