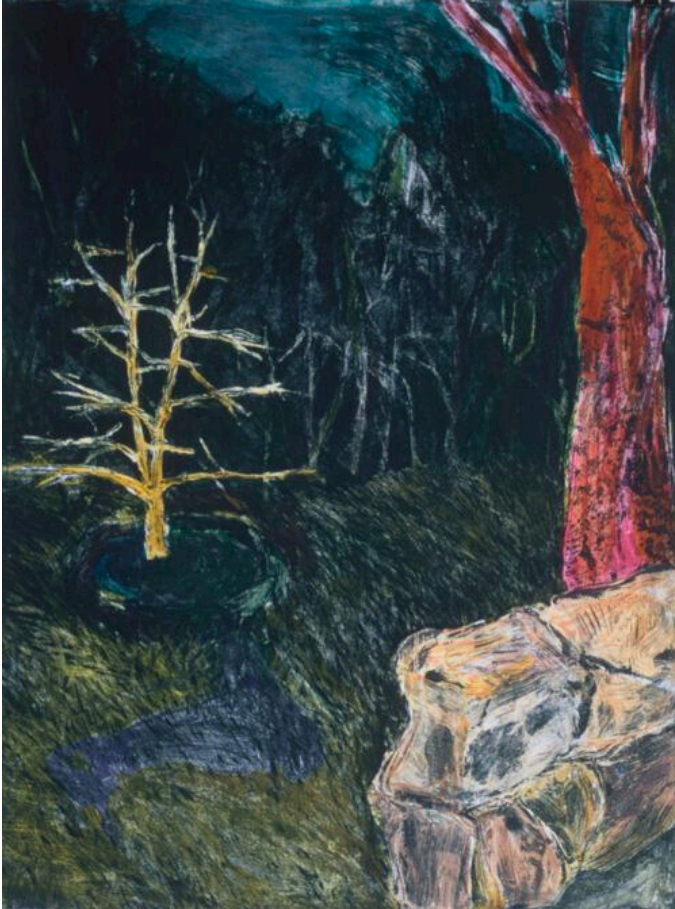


# Lent



Featuring artwork by  
**Katherine Brimberry**



ALL SAINTS PRESBYTERIAN CHURCH

---

Gallery • Lent 2026



## **Artist Statement**

In my art practice, which now spans over forty years, I am drawn to the natural world as much as I am to objects. I have a great interest in rocks, grasses, and plants that cover the surface of our world and the life processes of birth, growth, and death cycles seen in the landscape. I am also drawn to everyday fabricated found objects that on their own may not hold great significance.

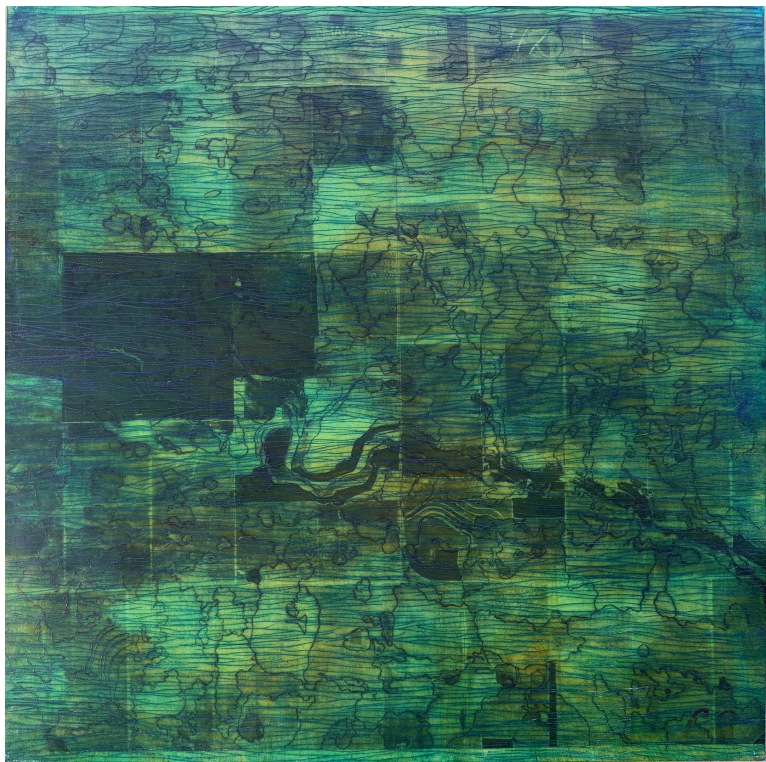
When I place found objects into visual relationships with landscape details, I intend to create an enigma. There are no firm answers in an enigma. The state of unknowing becomes a place of mystery. The viewer, without the benefit of the history of the objects, is presented with this mystery and can find and assign meaning. In my most recent work that focuses on the surface of the land, I layer historical, present, and future geological events.

My underlying intention is to create images that spark epiphany about time and space, life and death, past and future.

Katherine Brimberry  
2026







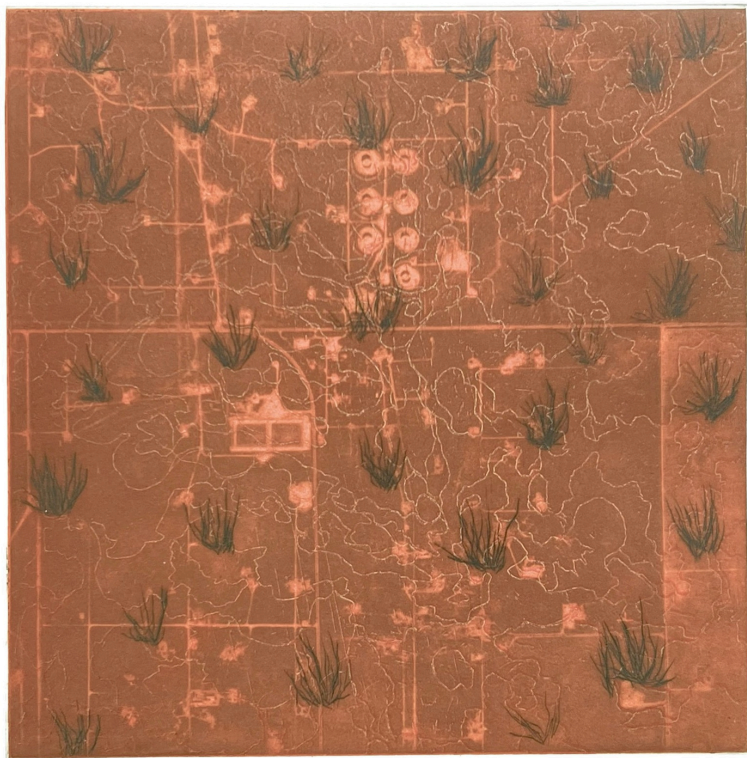
*Flood*

2023

Mixed media painting

24 x 24 in.

\$2000



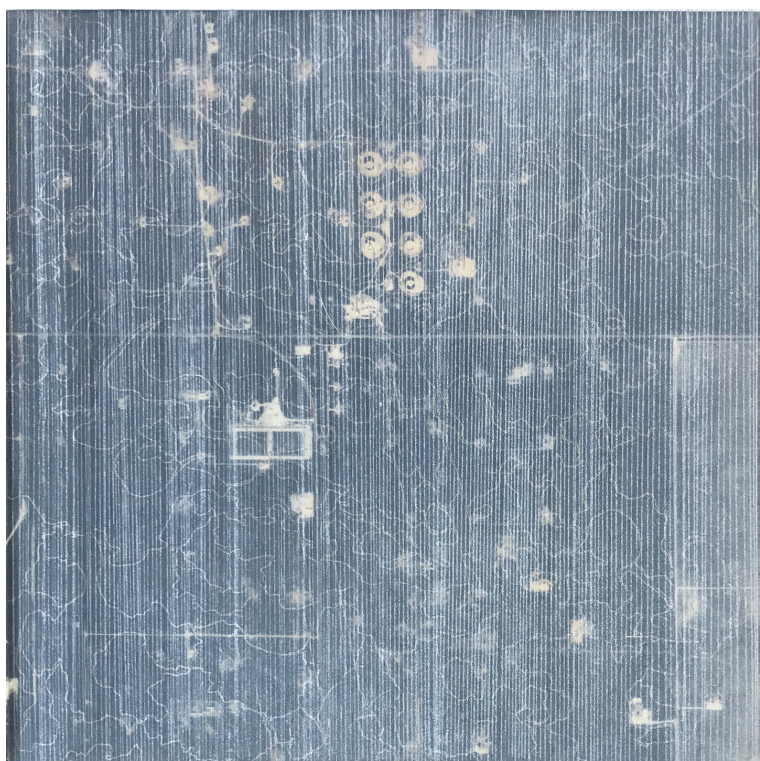
*Earth/Oil Field 1*

2020

Chine collé etching

19 ½ x 15 ½ in.

\$1500



*Wind/Oil Field 2*  
2020  
Chine collé etching  
19 ½ x 15 ½ in.  
\$1500





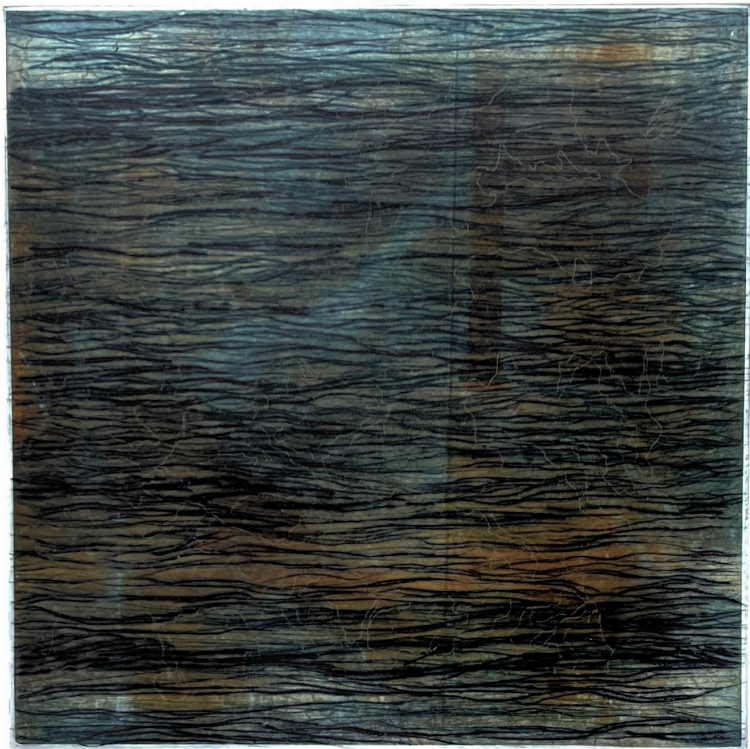
*Fire/Prairie*

2020

Chine collé etching

19 ½ x 15 ½ in.

\$1500



Water/Prairie

AIT

Y. G. 2020

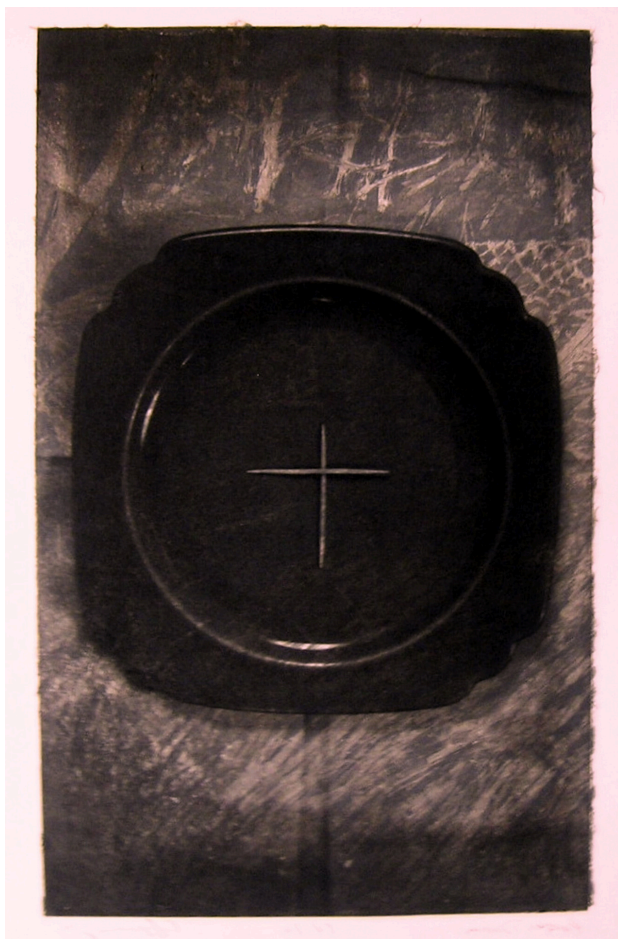
*Water/Prairie*

2020

Chine collé etching

19 ½ x 15 ½ in.

\$1500



*Easter Dinner\**

2001

Chine collé polymer gravure

16 x 10 in.

\$1400

*\*Alternate image*



*Adam Malady*  
2005  
Chine collé polymer gravure  
16 x 10 in.  
\$1800





*Cain Malady*

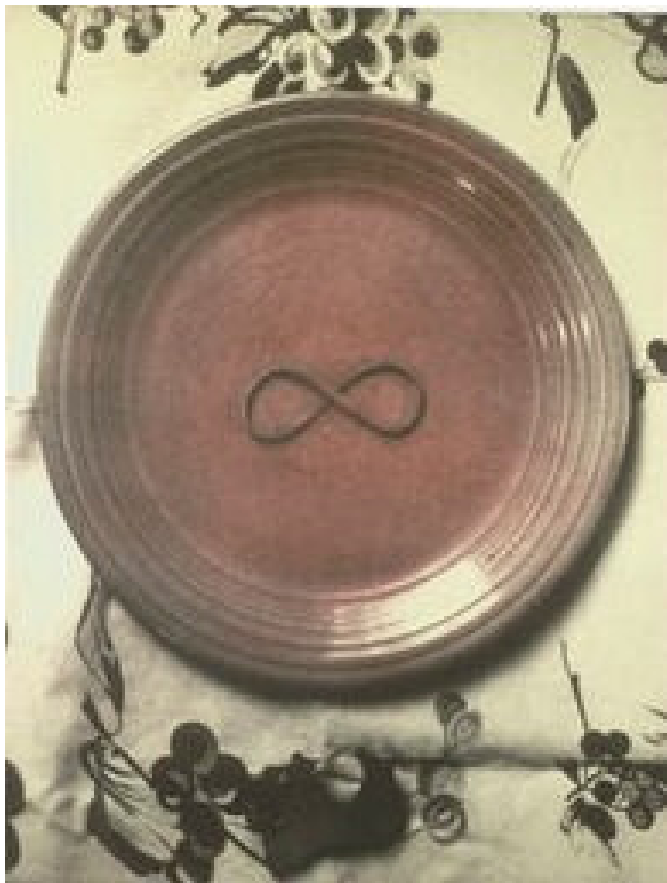
2005

Polymer gravure

16 x 10 in.

\$1800





*Marriage Plate*

2003

Chine collé polymer gravure

16 x 10 in.

\$1800



*Istanbul East/West*

2006

Etching

16 x 12 in.

\$1400



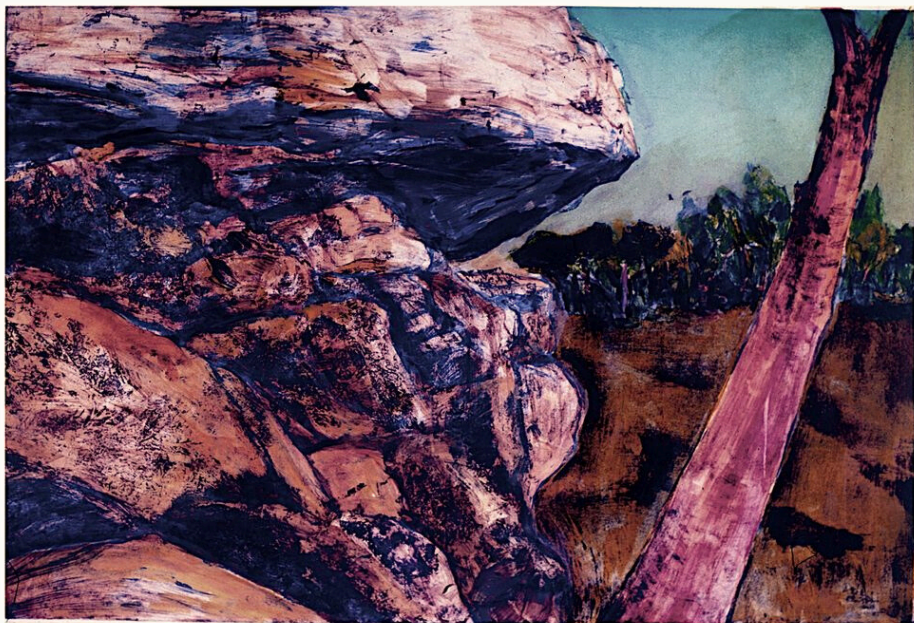
*Vespers and Isha*

2006

Etching

16 x 12 in.

\$1400



*Resting Place*

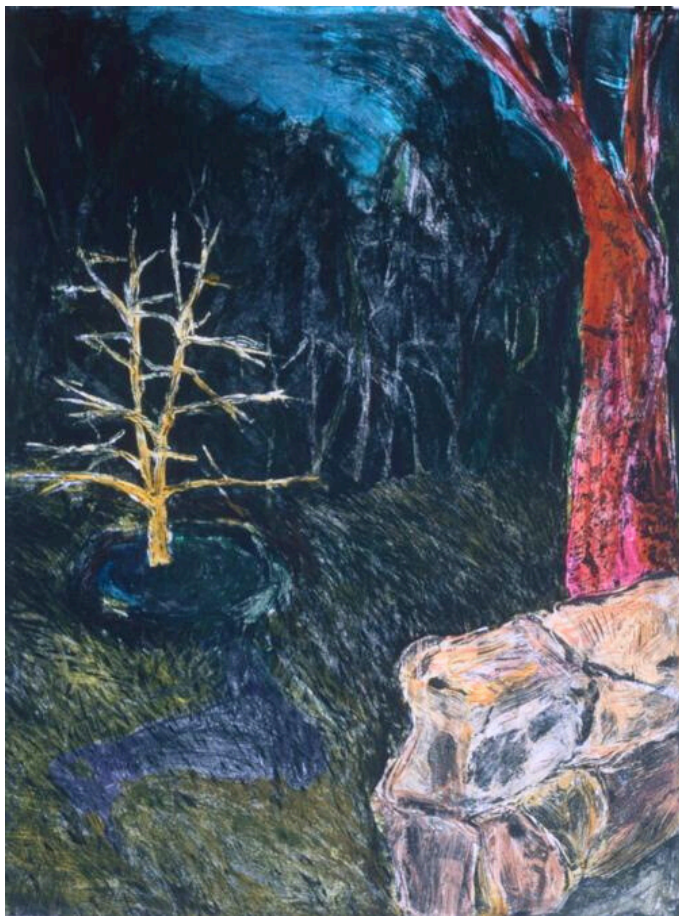
2000

Monoprinted etching

30 x 40 in.

\$2800





*Looking West*  
2000  
Monoprinted etching  
40 x 30 in.  
\$2800



## Artist Bio



Katherine Brimberry is an Austin-based artist, master printer, and the founding director of Flatbed Center for Contemporary Printmaking. A native of Brownfield, Texas, she earned her B.A. from Highlands University in Las Vegas, New Mexico, and pursued her graduate studies in printmaking at New Mexico State University in Las Cruces.

Brimberry is widely recognized for her painterly etchings and her decades of work as a collaborative intaglio master printer. Since co-founding Flatbed Press in 1989, she has played a central role in shaping the printmaking landscape in Texas and beyond, publishing and printing with renowned contemporary artists. Now the sole owner of Flatbed, she continues to serve as its director and lead printer, supporting both established and emerging artists through collaborative editions and studio access.

Her work is held in numerous public and private collections, including the Library of Congress, 3M Permanent Collection, the Modern Art Museum of Fort Worth, the Blanton Museum of Art, Galveston Art Center, Amarillo Museum of Art, and the Texas Tech Library. Brimberry has lived and worked in Austin for over 40 years, where she remains an active force in the printmaking community.

Contact Katherine for purchase  
[katherine@flatbedpress.com](mailto:katherine@flatbedpress.com)



ALL SAINTS  
PRESBYTERIAN

Music & Arts Ministry

David Lutes, Director - [dlutes@allsaintsaustin.org](mailto:dlutes@allsaintsaustin.org)

Laura Jennings, Curator - [ljennings@allsaintsaustin.org](mailto:ljennings@allsaintsaustin.org)

Carrie Zinnecker, Coordinator - [czinnecker@allsaintsaustin.org](mailto:czinnecker@allsaintsaustin.org)