

# The Southern Cone Initiative

Catalyzing gospel movements in every least-reached community in the Southern Cone.



## Partners in Christ,

1. **Family:** Samuel finished his freshman year at Cedarville University; Jesse graduated from High School; Abigail finished 10th grade; Hannah finished 7th grade; and Benjamin finished 6th grade. It was a long, long school year for the kids as they had to learn how "to do school" in the U.S. They struggled here and there but overall they thrived academically, socially, and spiritually. We are so glad God gave us this time in the U.S.
2. **Furlough:** Jonathan visited his last church in NV the second week of May. It marked the end of a long, long season of visiting churches and ministry partners in 20 States across the U.S; and completing ministry trips across 3 continents.
3. **Ministry:** We are flying back to Brazil on July 30th, 2024. We still lack \$3,000 to cover our airfare and we are still in need of funding for a work vehicle that will be used for Jonathan's ministry of training and developing church planters across the vast region of the Southern Cone. Prayerfully consider giving as the Lord leads.

In Christ Alone,

*Jonathan and Erin Mathews*

1

## OUR FAMILY NEED

Brazil Airfare Fund: \$3,000

Work Car Fund: \$22,500



2

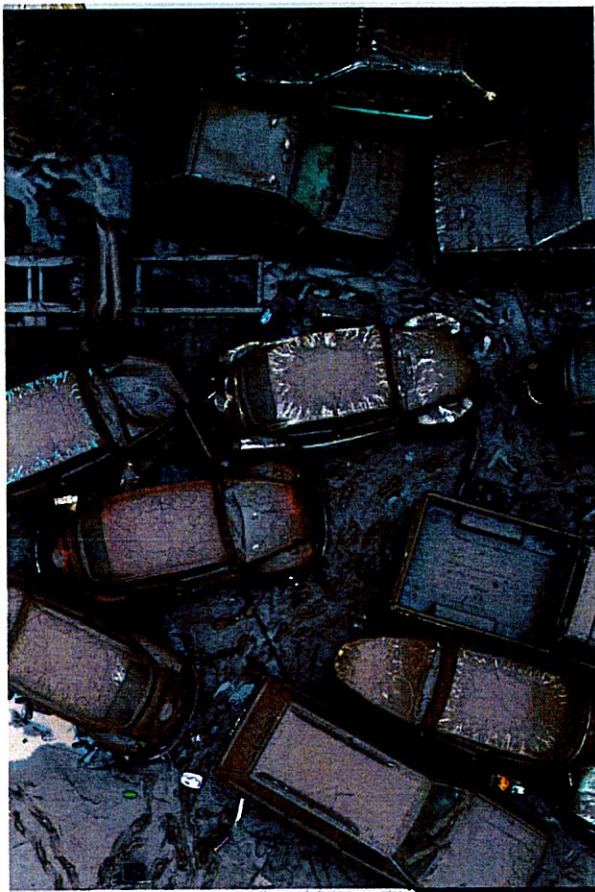
## OUR MINISTRY NEED

Help us purchase the equipment we need for one of our new training centers.



AMAZON GIFT REGISTRY





## OUR RESPONSE TO CRISIS

The Southern Cone Initiative is working alongside leaders of Converge Brazil, National Baptist Churches of Brazil, and other partner networks to provide shelter, food, and basic survival supplies to those most impacted by this disaster.

This region has historically been least reached by the gospel and our prayer is that we can serve the needy and proclaim the gospel in such a way that many disciples will be made and multiplied throughout the region.

We have already seen God work through this tragedy to bring many people unto Himself through the gospel.

[converge.org/missions/crisis-response](http://converge.org/missions/crisis-response)

## FLOODING IN RIO GRANDE DO SUL

Massive floods in Brazil's southern Rio Grande do Sul state have killed over 100 people within the first week of flooding, while damage from the rains forced more than 200,000 people from their homes. Many pastors who work closely with Converge in the Southern Cone have lost everything they own. Most displaced people have taken refuge in churches, schools, gymnasiums and other temporary shelters.

The floods left a wake of devastation, including landslides, washed-out roads and collapsed bridges across the state. Operators reported electricity and communications cuts and more than a million people in the state's capital city, Porto Alegre, are without water. National officials have said this is the worst natural disaster in Brazil's history.

