

# THE EPISTLE

The Monthly Newsletter of St. Luke's United Methodist Church

## The Epiphany of Our Lord

### Matthew 2:1-2

In the time of King Herod, after Jesus was born in Bethlehem of Judea, wise men from the East came to Jerusalem asking, "Where is the child who has been born king of the Jews? For we observed his star at its rising and have come to pay him homage."

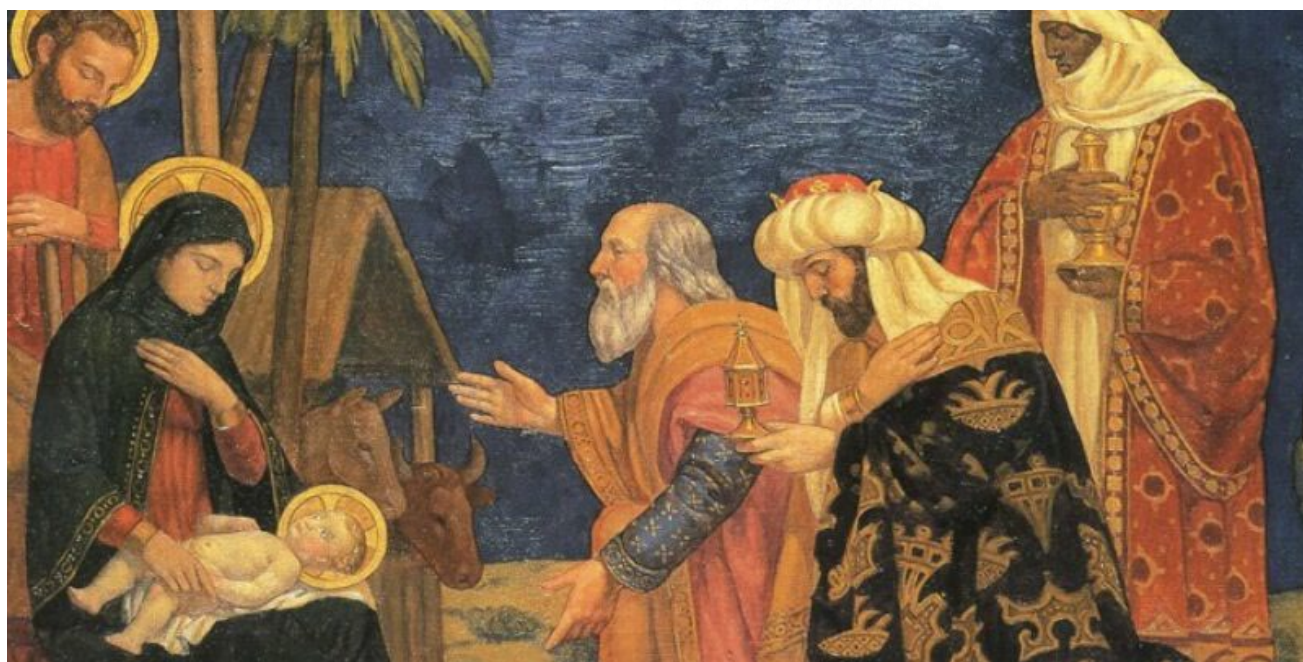
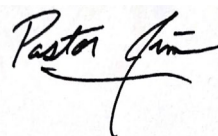
We're all familiar with the experience of dining out in a restaurant and leaving a tip at the conclusion of the meal. Some of us routinely tip fifteen percent. For others of us, it's twenty percent. Some of us believe we should use a tip to reward good service, or to penalize those servers who are less than diligent. Others of us believe the tip should be more or less the same, regardless of whether the server remembered to offer a second cup of coffee. Few of us, though, would dream of tipping much more than twenty percent.

Those Magi brought gifts with them, but their true gift to the Christ Child that day was not the objects they set before him: the gold, frankincense, and myrrh. Their true gift was the gift of themselves: for the long, arduous journey they had undertaken was far out of proportion to even the most expensive of gifts.

The tip the Magi left at the manger was 100 percent. For, in making such a time-consuming and dangerous journey, they were offering their very selves to the babe in the manger.

St. Luke's family, let us offer our very selves to Jesus in this New Year!

Faithfully,



## **PARDON OUR PROGRESS-CONSTRUCTION ZONE AHEAD!**

The Ladies Restroom-MB1 (across from the Parlor) will soon be back in use! The necessary demolition (which includes digging a very deep trench through the concrete foundation to access the old plumbing pipes) in the North Elevator Lobby, Main Building 1st Floor Corridor, Chapel, and Lounge is scheduled for the week of January 6, 2024. Those areas will have limited access until the new plumbing work is complete, however, the North Elevator Lobby and the Main Building 1st Floor Corridor will be usable on Sunday mornings. New flooring will be installed in the Parlor Kitchen, the North Elevator Lobby, and the Main Building 1st Floor Corridor; the carpet in the Chapel and the Lounge areas will be removed during demolition and re-installed after all construction has been completed. Thank you for your patience in the coming weeks. Also, our new Sanctuary Doors will be installed soon, so keep watching for more news on the upgrades and improvements to our beautiful church!

The Sherwood Elementary School Mitton Tree Ministry will be collecting winter gear through January for preschool- 5th grade students. What a lovely way to keep reminding the teachers and students that we are thinking of them throughout the winter months. We will make deliveries to Jaclyn, the school counselor, every few weeks. Thank you so much for your generous gifts. Store bought or hand made, your gifts are so heartfelt and appreciated.

In Christ's Love,  
The Church Ladies' Small Group  
Melinda Kaler Bette Colter  
Jacki Romey Barbara Simpson

contact: mtkaler1111@gmail.com



## **Sunday, January 26 is Leadership Sunday at St. Luke's!**

On this special Sunday, during worship, we will recognize all of our church's leaders and the numerous volunteers who are dedicated to serving in our church's ministries. All Staff and Church Council members should make plans now to attend a Leadership Information Event following worship, where we will provide you with tools to help you as you lead your ministry area. We will have a boxed lunch. More details will follow as the event approaches. For now, please save this date, January 26, 2025.



### *Join Us for Sweet Sunday on January 26th, 2025*

*The fourth Sunday of each month, we have a time of sweet treats and sweet fellowship between Sunday School and Church. Join us for our next Sweet Sunday in Hospitality Hall on January 26th, from 10 a.m. to 10:25 a.m. Treats and Coffee will be there. We just need you to come share a little sweetness.*

- **A blood mobile will be coming to St. Luke's UMC on January 12 at 9:30am. They will be located in the CLC parking lot.**
- **Lifeline Screening will be coming to St. Luke's March 14th in the gym. More details to come!**

### **DECEMBER 2024 HONORIUMS AND MEMORIALS:**

#### **Honoriums:**

**In Honor of Betty Green from Mark, Sam, and Cody Green**

**In Honor of David and Denise Hensley from Mary Todd and Gene Green**

**In Honor of Carolyn Galloway from Harry and Bette Colter**

#### **Memorials:**

**In Memory of Bettye Jo Masters from Kelli Brizzolara, Katie and Larry Kaler, Carla Taylor, Gretchen, Paul, and Campbell Lewis, Galen Colbert**

**In Memory of Annette Stevens from Doey Barrar**

**In Memory of Ouida Beatty (my Mom) from Sarah Jane Tice**

**In Memory of Michael Neenan from David and Virginia Wages**

**In Memory of Dorothy Ham from Carolyn Galloway, Shirley Chu, Deb Jordan, Emily Matthews**

**In Memory of Lourenda McKinney from David and Virginia Wages, Janie Hendrix, Mary Lou Cushing, Sarah Jordan, Miller Delgadillo, Doey Barrar, Carole Feisal, Rorie Read, Marilyn Sandler, Carolyn Galloway, Barbara Simpson, Hal and Betty Padgett, Karen Kinney, Jewett Cole, Harry and Bette Colter, Clay Cole, David Smith, Wally and Lynne McAlexander, Shirley Robinson, James D. Padgett, Jack and Judy Hall, Dot Dickey, Mary Palmer, and Laura Bostwick.**




## EMERGENCY MANNA FOOD SNACKS

Manna bags are small emergency snacks in brown bags one may see every Sunday leaving in a clutched hand after Sunday service. Possibly, one might notice during the week as many as fifteen to twenty “walk by” individuals being handed a bag near the hospitality door. This year \$1,216.00, non-budgeted contributions paid for supplies providing these 850 bags. Thank you to all who contribute through giving or service to another St. Luke’s Wesleyan effort serving others. Any small amount made out to the Manna Account and placed in the offering plate is much appreciated. Remember the needy that use all of our food ministries in your prayers. Thank you! You may also view the contents of one of these bags in the UMM’s display case on the wall near the choir room.

## SEEKERS CLASS

The Seekers, a multigenerational study and discussion class, led by class members, starts the book of Acts in January. All are welcome, come to Second floor across from Library.



**PROJECT 20/20 EYEGLASSES  
END OF YEAR CONTRIBUTION FROM  
ST. LUKE’S:  
110 GLASSES, THANK YOU!**



# Day School News

Thank you to everyone that participated in the Advent Calendar activity and donated to our school. Children go through a LOT of supplies!

Our Christmas Program was so beautiful and full of Christmas joy! There is nothing like preschoolers acting out the nativity story to showcase the wonder of Christmas.

We are looking forward to a wonderful 2025! Thank you for the many ways you support our sweet little school.



# *OUR MISSION STATEMENT*

**We are becoming a faithful community of disciples striving to share the heart,  
mind and hands of Jesus Christ with all people.**

## **Staff Directory**

**Jim McKinney**  
**Senior Pastor**

jim.mckinney@stlukesumc.org  
901-361-5726 (Cell)

**Dennis Neenan**, Utility Pastor  
901-378-7505 (Cell)  
dpneenan@comcast.net

**Harry Colter**, Pastoral Assistant  
harry.colter@stlukesumc.org

**Jacob Allen**  
Director of Music  
jacob.allen@stlukesumc.org  
920-475-7972 (Cell)

**Wes Kirkpatrick**, Organist

**Mary Page Contreras**  
Children's Ministry Director  
marypage.contreras@stlukesumc.org  
(901)826-3493

**Amy Pearson**  
Day School Director  
amy.pearson@stlukesumc.org  
901-407-7300

**Alexa Velasco**

Director of Communications  
alexa.velasco@stlukesumc.org  
901-452-6262, ext 114

**Eddie Anderson**

Facilities Manager  
eddie.anderson@stlukesumc.org  
901-452-6262, ext 102

**Tracy Farnsworth**

Church Administrator  
tracy.farnsworth@stlukesumc.org  
901-452-6262, ext 105

**Sheridan Harris**

Youth Ministry Director  
sheridan.harris@stlukesumc.org  
901-452-6262, ext. 119

**Jabarey Luster**

Challengers After School Director  
jabarey.luster@stlukesumc.org  
901-407-7301

Sunday School: 9:00 a.m.

Worship: 10:30 a.m.

[www.stlukesumc.org](http://www.stlukesumc.org)

901-452-6262

[info@stlukesumc.org](mailto:info@stlukesumc.org)