



## Asbury Articles: February 22, 2023

---

### Asbury Email Opt-In Survey

As we transition from one emailing system to another, we want to make sure that you receive the emails from Asbury that you want...and don't receive the ones you don't want! The last thing we want to do is clog up your inbox, but we also want to make sure that you have the opportunity to choose the information you want. Want to hear about everything? Great! Only want to hear about a few things? Also great!

Fill out this [survey](#) so that we know what lists to put you on!

Note: this is an **opt-IN** survey. You are selecting the emails you **want** to receive.

### UPCOMING ASBURY EVENTS

### Attention Asbury Bowlers!

THIS Sunday, February 26 | 2:00pm-4:00pm | Granada Bowling Alley

If you have signed up to go bowling this Sunday (February 26), please get to the bowling alley early (before 2pm) to get your shoes and receive your lane assignments. Our time starts immediately at 2pm, so let's not waste a minute of precious bowling time. It will be a blast!

---



## Ash Wednesday events

Wednesday, February 22, 2023

### *Ashes To Go*

7:30am - 9:00am

Stop by on your way to  
work or school!

### *Ash Wednesday service*

6:30pm in the Chapel

Note: this service will not  
be live-streamed

## Ash Wednesday at Asbury

Wednesday, February 22

### **Ash Wednesday Service**

**6:30pm in the Chapel**

Asbury's Ash Wednesday Service is in-person in the Chapel this year at 6:30pm on February 22nd. This short service will speak to the meaning of the day and have a moment for you to receive the imposition of the ashes. This service **will not** be live-streamed, so we invite you to this intimate in-person worship experience as we start the season of Lent.

## Asbury Players Presents: "The Savannah Sipping Society"

March 4-12

Meet **Marlafaye** (Marsha Howard). This "I'll tell you what I think", Texan is unwaveringly loyal....but to a fault. When she finds herself back in the single-life, she finds it difficult to forge that loyalty again. That is until 3 people come along who show her what trust is really about.

### **Pre-Show Dinner on March 11th**

Join us for dinner before the show! On Saturday, March 11 at 5:30pm, Asbury's Fellowship Team is preparing a delicious chicken dinner, complete with beverages and dessert, for only \$15! Advance tickets are required, and can be purchased online via the link below or during fellowship time at church.

Come see 'The Savannah Sipping Society', March 4-12 and join us for dinner on March 11th! Tickets for the show and dinner are found online via the link below.

[Buy tickets here!](#)

---

## United Women in Faith "Sew-In"

Thursday, February 23 | 1pm - 3:30pm

The United Women in Faith (UWF) will be having a "sew-in" on February 23 from 1pm to 3:30 pm, in rooms 11 & 12. We will be working, again, on quilts to be given out by VIM members to share. Bring your machine if you can. Contact [Lorraine Magee](#) for any questions.

---

## VIM Trip to Paradise coming in June!

Our first VIM trip of 2023 to Paradise to work with HCRN is scheduled for the week of June 4th. Volunteers from Asbury, Lynnewood UMC, and SRVUMC are invited to put this on their calendars. A signup message will come out closer to the event, maybe around April.

---



## YOUTH MINISTRY

## Alabama Service Trip Pancake Breakfast

March 12th | 9-9:45 a.m. & 11-11:45 a.m

The Alabama Service Trip Pancake Breakfast is around the corner! This will be our March service project, and we will need all the help we can get. Even if you aren't planning to go on the Alabama Service Trip, we want you to still serve and participate.

We will be asking all Youth and team members to be there at 8:00 a.m. to start working and getting ready for the serving at 9:00 a.m.

There will be a sign up going out soon for items that we will need for the fundraiser.

Please let Brad know if you plan to help and attend!

---



## UPCOMING COMMUNITY EVENTS

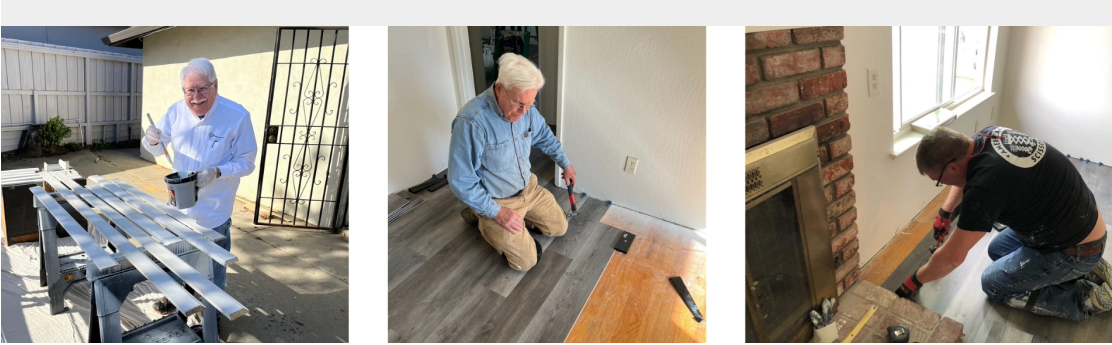
## Asbury Habitat Workday

Saturday, February 25

The next Asbury group workday for Habitat is Saturday February 25 at 1250 Las Juntas Way in Walnut Creek.

To register go to <http://vhub.at/unityday>

The 42 home Esperanza project now includes both interior and exterior work. At least through April, Habitat workdays will be the 4th Saturday of the month so they do not conflict with the parsonage project in Pittsburg. For questions about the project or carpooling for the workday contact [Bob Hoffman](#).



## Pittsburg UMC Parsonage Renovation Continues

The renovation of the parsonage for the Pittsburg, CA UMC continues to make excellent progress. A team of eight workers, five from Asbury, worked this last Saturday, Feb. 18. The vinyl plank flooring is complete in the three bedrooms, the hall and almost complete in the living room. The baseboards have been painted and installed in one bedroom. A new window has replaced a leaky window in a bathroom and several shrubs and trees have been pruned.

Our next workdays are Saturday March 4 and 18. We will continue to meet at Asbury near the office building at 8:00am to car pool. We should be back by 5:00pm. Please email [Dick Crawford](#), or call 925 413-4116 if you plan to participate. If you have questions please call Dick Crawford.

The work these next two Saturdays will involve mainly installing vinyl plank flooring in the kitchen, installing baseboard, and installing window coverings. The new kitchen cabinets should have arrived before March 18 and will need installation. All tools will be provided, but if you have some favorites, mark them if you bring them along. Also bring gloves, knee pads, lunch and water.

If you choose to drive yourself (about 45 - 50 minutes) the address is 3345 Crestview.

We could use monetary donations toward this effort which is costing about \$20,000. If you choose to donate please direct to account 3100-02 Pittsburg Parsonage Renovation.

---

## Sunday, March 5: Rolling Road Closures

There will be a Half Marathon in Livermore on Sunday, March 5 and involves rolling street closures. We realize that this will affect folks from the west side of Livermore coming to church on that day and wanted to make sure to spread the word so that if this applies to you, you may make adjustments as needed!

The race will begin and end the intersection of First Street and South Livermore Avenue at 7:30 a.m., and last around three hours.

Rolling closures will occur March 5, according to the Livermore Police Department:

- First St between S L St and S Livermore, 2:30 a.m. – 12 p.m.
- First St between S Livermore and McLeod, 5 a.m. – 11:30 a.m.
- S Livermore between First St and Second St, 7 a.m. – 11 a.m.
- McLeod St between First St and Second St, 7 a.m. – 11 a.m.
- Second St between McLeod St and S L St, 7:30 a.m. – 11 a.m.
- S L St between First St and College Ave, 7:30 a.m. – 10:30 a.m.
- Arroyo Rd (southbound only) between College Ave and Concannon Blvd, 7:30 a.m. – 10:30 a.m.
- Arroyo Rd (southbound only) between Concannon Blvd and Wetmore Rd, 7:30 a.m. – 8:30 a.m.
- Arroyo Rd (northbound only) between Sycamore Grove Park and Wetmore Rd, 8 a.m. – 9:30 a.m.
- Concannon Blvd (eastbound bike lane only) between Arroyo Rd and Wente St, 8 a.m. – 10:30 a.m.

---

## Interfaith Interconnect Religion Chat

March 8 | 5pm - 6:30pm | Zoom | Meeting ID: 817 7005 2038

**5pm – 6pm: Religion Chat**

**6pm – 6:30pm: Optional breakout discussion groups**

[Zoom room](#) opens at 4:45pm

**Topic:** How does your religion adapt itself to reflect changing times?

**Speakers:** Rev. Steve Wilde, First Presbyterian Church, Livermore;  
Hosai Mojaddidi, Muslim Community Center East Bay, Pleasanton

All are welcome!

---

## Faith, Food, and Farms Conference

Wednesday, March 8 | 3pm – 7:30pm

**Wednesday, March 8 | 3pm – 7:30pm**

**Niles Hall at Preservation Park | Oakland, CA**

*Pre-Conference Tours: 11:30am - 2:30pm*  
*Opening Plenary: 3:00pm - 3:45pm*  
*Breakout Session One: 3:45pm - 4:35pm*  
*World Cafe: 4:45pm - 5:20pm*  
*Breakout Session Two: 5:30pm - 6:20pm*  
*Closing Plenary: 6:30pm - 7:30pm*

Lay leaders and clergy leading projects faith community projects to support access to food, and food system advocacy: *This Conference is For You!*

Be inspired by peers from diverse backgrounds working for food justice and a more sustainable agricultural system. The interactive format includes interactive discussions; and panels highlighting successful local and national projects. Register [here!](#)

## ASBURY COMMUNITY

### Women of the Spirit: New Book Study Beginning

The Women of the Spirit group is leading a book study on “The Light We Carry: Overcoming in Uncertain Times” by Michele Obama. The study will meet every Thursday, starting February 23, from 10:30 a.m.–noon in the Fireside Room. Please contact [Linda Culpepper](#) via email or phone (925-443-6938) to sign up.

### New Book Study on "Luke: Jesus and the Outsiders, Outcasts, and Outlaws"

Interested in joining a group, but waiting for the right time? Here's your chance!

The Asbury group led by Cory Coll will be beginning a new book study, which is the perfect time for new people to join in! They will use *Luke: Jesus and the Outsiders, Outcasts, and Outlaws* by pastor and bestselling author Adam Hamilton. In the book, Hamilton explores the life, teachings, death, and resurrection of Jesus as told in the Gospel of Luke. Through Luke's stories we find Jesus' care and compassion for all as he welcomes sinners and outcasts. As we study Luke and see Jesus' concern for those who were considered unimportant, we hear a hopeful and inspiring word for our lives today.

The group meets on the first and third Tuesday of the month at 6pm on Zoom. Contact [Cory](#) for more information, including the Zoom link.



---

## UMCOR Response to Earthquakes in Turkey and Syria

A 7.8 magnitude earthquake struck southern Turkey at 4:17 a.m. on Monday, Feb. 6, 2023, the most powerful earthquake recorded since 1939. In the hours that followed, at least 78 aftershocks were reported, followed by a second earthquake of 7.5 magnitude.

The earthquake and aftershocks also impacted northwest Syria, where 4.1 million people depend on humanitarian assistance. Syrian communities, many of them women and children, are simultaneously facing an ongoing cholera outbreak and extreme winter weather, including heavy rain and snow.

Thousands have been killed in both countries, and deaths continue to rise as rescue crews seek survivors in collapsed buildings. The humanitarian response is struggling to ramp up to meet the need among the devastation and winter weather.

UMCOR is actively working to help those in need from the earthquakes. You can donate to UMCOR through Asbury via our [Giving page](#).

---

## Join the Landscaping Team!

Do you like working outdoors? Would you or your family like to be help in in the upkeep of our campus grounds? It doesn't take much time - only about 2 hours or so every other month. As you all know, many hands make light work – and chores are always more fun when you have help.

If you're interested, please contact [Lorraine Magee](#) (925-443-7913) as she will be updating the Landscape Detail soon.

---

## Lent Theme: Good Enough

We are using *Good Enough: 40ish Devotionals for a Life of Imperfection* by Kate Bowler and Jessica Rich as a resource of our Lenten Worship Theme. Our Theme, Good Enough, celebrates kindness, honesty, and interdependence in a culture that rewards ruthless individualism and blind optimism. We can rest in the encouragement to strive for what is possible today while recognizing that although we are finite, the life in front of us can be beautiful. Jesus shows us how to be good enough.

We wanted to alert you now in case you would like to order the book and follow along. *Good Enough* is available in the following formats: physical book, Kindle, and audio (you can order through you favorite place to get books). Small group leaders have been notified and we will let you know if any groups decide to use it and are open to new folks attending.

Lent begins with Ash Wednesday on February 22.

## Asbury Masking Policy

Alameda County is following the CDC guidelines for masking. When community transmission is low, masking indoors may be optional. When community transmission is medium or high, masking indoors is strongly recommended. Asbury will follow the CDC guidelines, and we support and encourage mask wearing indoors, especially for those with underlying health conditions or who are not fully vaccinated and boosted.

## Sunday Prayer Requests

Please pray for the [requests](#) that were made during prayer time on Sunday.

If you would like to be on the email prayer chain, please contact the [church office](#).

## EVENTS AT A GLANCE

### RECURRING EVENTS

- **Sundays; 10am:** Asbury worship service
- **Sundays; 11:30am:** Cherub Choir rehearsal
- **Sundays; 11:30am:** Rainbow Choir rehearsal
- **Sundays; 11:30am:** Youth Choir rehearsal
- **Thursdays; 7:30pm:** Faith Choir rehearsal

### OPEN SMALL GROUPS

- **Every Sunday; 8:15am:** Meditation Circle on Zoom (Contact [the office](#))
- **1st and 3rd Monday; 6:30pm:** Monday Night Small Group (Contact [Ruth](#))
- **Thursdays; 7:45am:** Men's Bible Study on Zoom (Contact [Art](#))
- **Saturdays; 10am:** Craft and Chat [Zoom](#) gathering
- **3rd Saturdays; 10:30am:** Caregivers' Support Group on [Zoom](#)

### FEBRUARY

- **Wed, Feb 22; 6:30pm:** Ash Wednesday service, the Chapel (**not** live-streamed)



- **Thurs, Feb 23; 1pm - 3:30pm:** United Women in Faith "sew-in"
- **Sat, Feb 25:** Asbury Habitat Workday
- **Sun, Feb 26; 2-4pm:** Asbury Bowling

## **MARCH**

- **March 4-12:** Asbury Players, "The Savannah Sipping Society"
- **Sat, March 11; 5:30pm:** Pre-Show Dinner
- **Sun, March 12, before and after worship:** Youth Pancake Breakfast Fundraiser



## HOW CAN WE HELP?

### **Have questions?**

Reply to this email or call the office at 925-447-1950.

### **Have an article, announcement, or event to submit?**

Send them to the [Alaina Harrison](#), our Communications Specialist, **by 3pm on Tuesdays.**

### **Miss a newsletter or need to go back and re-read?**

Check out the [newsletter archive](#)!

---

### **Asbury United Methodist Church**

4743 East Avenue | Livermore, CA 94550