



SUNDAY, NOVEMBER 10, 2024
TWENTY-FIFTH SUNDAY AFTER PENTECOST
TEN O'CLOCK IN THE MORNING



THE FIRST CONGREGATIONAL CHURCH OF GREENWICH

declares itself to be Open and Affirming (ONA); open to all for participation, membership, leadership and employment and affirming of all who wish to join us as children of God.

We continue to give thanks for God's guidance in our journey of faith.

We welcome you this day and are glad you made the choice to join us for this worship service.

May it be a blessing to you.

Welcome to Worship!

We welcome you this day and are glad you are here! May worship be a blessing to you.

First Church Welcomes *You.*

With Worship. A casual tone, stirring music, moving prayers, & a faith-invoking message. **Prayer Book requests** (in Narthex) are uplifted during the Prayers of the People.

With Inclusion. Open & Affirming (ONA). We make a point of meeting all and name tags worn.

With Communion. The first Sunday of each month, all ages share in the sacred meal together. We use juice & gluten-free bread!

With Care. We pass the Peace of Christ to one another. We are a mask-friendly, come-as-you-are, leave-as-a-friend community.



First Church Welcomes *Children.*

The PrayGround. In the Chapel space, guiding kids in worship.

Cherub Choir, Celebration Singers, & Genesis Choir. Children of all ages are welcome to offer music in worship!

Children's Message. A moment for kids & the child in each of us.

Church School. Faith learnings for the day continue in the Undercroft classrooms after the Children's Message.

Children's Take Home Library. Located by the PrayGround. Check out what interests you & bring it back next week!



First Church Welcomes *All.*

Sensory Sanctuary & Rocking Chairs. Focusing resources located in the back of the Meetinghouse.

Visual Worship Aids & Live captioning. Found on the monitors.

Audio Hearing Aids. To use, ask Greeters or Ushers.

Spaces in Meetinghouse for Wheelchair Users

Exterior Ramp. In the back of the Meetinghouse, driveway side.

Liftavators. Located inside, from Narthex to Auditorium Level & Outside in the Memory Garden.



Enjoy a cup of coffee, food, & fellowship at

Community Hour after the service!

ORDER OF WORSHIP

First Church is a mask-friendly community of faith. Anyone who prefers to wear a mask should feel comfortable doing so.

PRELUDE

Sarabande On Land Of Rest
Gerald Near (b. 1942)
Dr. Craig Scott Symons, organ

CHIMING OF THE HOUR

CALL TO COMMUNITY

Reverend Patrick Collins

Please sign and pass the red Fellowship Pad found at the end of your row near the center aisle, then pass it back to the center aisle, noting the names of those worshiping near you so you may greet them at the end of worship.

If you are the person on the center aisle, please remove the completed sheet and place it in the plate during the offering.

MOMENT FOR GIVING TREES

Mariann Ekernas

MOMENT FOR ANNUAL GIVING

Paul Ghaffari

†CALL TO WORSHIP

One: The word of God came to Jonah

All: The word of God comes to us:

One: Go

All: despite our fears

One: Speak

All: the truth of God

One: Love

All: our neighbors and our enemies

One: Forgive

All: as we have been forgiven

One: Receive

All: grace upon grace overflowing from the fullness of God.

†CHORAL INTROIT

†HYMN

Take My Life And Let It Be (verses 1-4)
306 Glory To God Hymnal (purple)

†PRAYER FOR WHOLENESS (in unison)

God, you call us and sometimes we duck under the table hoping you didn't notice us when you walked into the room. You call us and sometimes we grab a stapler and a stack of papers trying to look too busy to be bothered at the moment. You call us and sometimes we just say, "No!" We know that we aren't expected to do everything but we often forget that you call us to be ourselves in the places where our very self is what is most needed. Give us the grace to say "Yes" to your call even now as we offer our silent confessions. Amen.

Moment of silence for personal reflection

† Please rise in body or in spirit

†ASSURANCE OF GRACE

†PASSING OF THE PEACE

God makes peace within us. Let us claim it. God makes peace between us. Let us share it.


One: May the peace of Christ be with all of you.

All: And also with you.

†RESPONSE (remain standing)


Glory To God

Capo 3: (G) B \flat (D) (G) (D) F B \flat F (G) B \flat (D) F (Em) Gm (D) F




1 Glo - ry to God, whose good - ness shines on me,
2 World with - out end, ♪ with - out end. A - men.

(D) F (G) B \flat (C) E \flat (G) B \flat (Em7) Gm7 (A7) C7




and to the Son, whose grace has par - doned me,
World with - out end, ♪ with - out end. A - men.

(A7) C7 (D) F (F#) A (Bm) Dm



and to the Spir - it, whose love has set me free.
World with - out end, ♪ with - out end. A - men.

(Bm7) Dm7 (D) F (Bdim7) Ddim7 (Em7) Gm7 (Dm)(A7)(D) Fm C7 F




As it was in the be - gin - ning, is now and ev - er shall be. A - men.

CHILDREN'S MESSAGE


(During the response, the children will return to their seats or depart for Church School)

RESPONSE

He's Got The Whole World



He's got the whole world__ in his hands,__ he's got the whole world__ in his hands, he's got the



whole world__ in his hands,__ he's got the whole world in his hands.

† Please rise in body or in spirit

FIRST LESSON

Jonah 1 & 3 (selected verses)
New Revised Standard Version
Bill DeHaven

Now the word of the Lord came to Jonah son of Amittai, saying, “Go at once to Nineveh, that great city, and cry out against it, for their wickedness has come up before me.” But Jonah set out to flee to Tarshish from the presence of the Lord. He went down to Joppa and found a ship going to Tarshish; so he paid his fare and went on board, to go with them to Tarshish, away from the presence of the Lord.

But the Lord hurled a great wind upon the sea, and such a mighty storm came upon the sea that the ship threatened to break up. Then the sailors were afraid, and each cried to his god. Jonah, meanwhile, had gone down into the hold of the ship and had lain down and was fast asleep. The captain came and said to him, “What are you doing sound asleep? Get up; call on your god! Perhaps the god will spare us a thought so that we do not perish.”

The sailors said to Jonah, “What is this that you have done!” For the men knew that he was fleeing from the presence of the Lord, because he had told them so.

Then they said to him, “What shall we do to you, that the sea may quiet down for us?” For the sea was growing more and more tempestuous. He said to them, “Pick me up and throw me into the sea; then the sea will quiet down for you, for I know it is because of me that this great storm has come upon you.” So they picked Jonah up and threw him into the sea, and the sea ceased from its raging.

The Lord provided a large fish to swallow up Jonah, and Jonah was in the belly of the fish three days and three nights.

ANTHEM

Go In Peace
Bernhard Molique (1802-1869)
The Chancel Choir

SECOND LESSON

Jonah 3 & 4 (selected verses)
New Revised Standard Version

Then the Lord spoke to the fish, and it vomited Jonah out onto the dry land.

The word of the Lord came to Jonah a second time, saying, “Get up, go to Nineveh, that great city, and proclaim to it the message that I tell you.” So Jonah set out and went to Nineveh, according to the word of the Lord. Jonah began to go into the city, going a day’s walk. And he cried out, “Forty days more, and Nineveh shall be overthrown!” And the people of Nineveh believed God; they proclaimed a fast, and everyone, great and small, put on sackcloth.

When God saw what they did, how they turned from their evil ways, God changed his mind about the calamity that he had said he would bring upon them, and he did not do it.

But this was very displeasing to Jonah, and he became angry. He prayed to the Lord and said, “O Lord! Is not this what I said while I was still in my own country? That is why I fled to Tarshish at the beginning, for I knew that you are a gracious and merciful God, slow to anger, abounding in steadfast love, and relenting from punishment. And now, O Lord, please take my life from me, for it is better for me to die than to live.” And the Lord said, “Is it right for you to be angry?” Then Jonah went out of the city and sat down east of the city and made a booth for himself there. He sat under it in the shade, waiting to see what would become of the city.

MESSAGE

All Our Enemies?
Reverend Patrick Collins

†HYMN

Loaves Were Broken, Words Were Spoken
498 Glory To God Hymnal (purple)

PRAYERS OF THE PEOPLE

THE LORD’S PRAYER (in unison)

Our Father, who art in heaven, hallowed be thy name. Thy kingdom come. Thy will be done on earth, as it is in heaven. Give us this day our daily bread. And forgive us our debts, as we forgive our debtors. And lead us not into temptation, but deliver us from evil: for Thine is the kingdom, and the power, and the glory forever. Amen.

CALL TO OFFERING

Kate Collins & Family

Using your smartphone messaging app, text **FCCOG Donate** to **73256** or click [HERE](#) to access the online giving webpage or scan this QR code to donate.

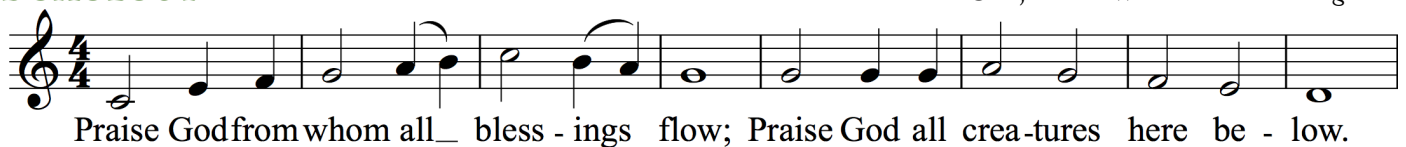


OFFERTORY SOLO

Come Home
Sally DeFord (b. 1959)
Lauren Mickley, soprano

†DOXOLOGY

Praise God, From Whom All Blessings Flow



†PRAYER OF DEDICATION

† Please rise in body or in spirit

THE SACRAMENT OF COMMUNION

Invitation

Prayer of Consecration

Words of Institution

Receiving the Bread and Cup

In the tradition of our church, let us partake of the bread (gluten-free) and the cup together, remembering our individual uniqueness in the eyes of God and our diversity and unity within the Body of Christ.

Those receiving communion are asked to come forward by the center aisle, receive the bread and cup, then return to their seats by the side aisle.

†HYMN

To God Be The Glory
634 Glory To God Hymnal (purple)

†BENEDICTION

†CHORAL RESPONSE

†POSTLUDE

Postlude
Noel Rawsthorne (1929-2019)

† Please rise in body or in spirit

All music used with permission under ONE LICENSE #A-726454. All rights reserved.

COMMUNITY HOUR

Join us for Community Hour in the Meetinghouse where you can greet one another, have a cup of coffee, and a light snack. Hosts for November are members of the Annual Giving Committee.

CHURCH SCHOOL

Nov 10 & 17- Regular Church School

Nov 24 - Harvest Sunday - All Ages Worship



BLOOD PRESSURE SCREENINGS



Sue Asselin, Parish Nurse is available for blood pressure screenings and health consultations following today's worship service. She will be in her office, just to the right of the Auditorium stage. During the week she is available by appointment by calling 203-637-1791 ext. 821.

MEDICARE PART D PRESCRIPTION DRUG INSURANCE

Open enrollment for Medicare Part D prescription drug insurance ends December 7. The plan you have now may not be the most cost-effective plan next year. It is wise to review your options annually. Help deciphering the choices is available from your Parish Nurse here at First Church or through the Town of Greenwich. Personal counseling sessions include Internet navigation and comparison of plans. For an appointment with your parish nurse, call Sue Asselin at church extension 821 or email susana@fccog.org. For an appointment with a Town of Greenwich counselor, call the Commission on Aging office at 203-862- 6707 or sign up on line at <https://www.greenwichct.gov/1785/Medicare-Insurance-Counseling>

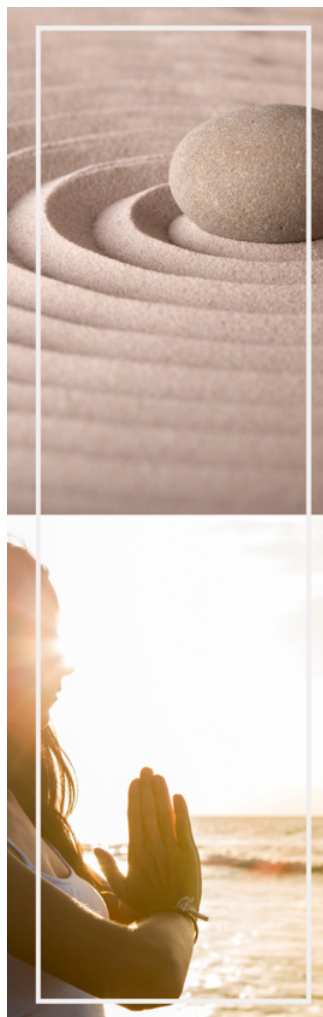


TODAY - SOOTHING 2ND HOUR: TAI CHI WITH WILL MORRISON



Release your way to improved health and mindfulness with the process of releasing tension through movement. This opens pathways that enable an integrated body and mind to develop and heal itself. Tai Chi benefits are many: muscle strength, flexibility, balance, and aerobic conditioning (Harvard Medical School); addresses mood, energy, and stamina (Mayo Clinic); and improves fibromyalgia, thinking power, and depression management (Cleveland Clinic).

Will Morrison is a senior student of Ed Young, with whom he has studied since the early '80s, and Liam Comerford. Mr. Young was a senior student and translator for Professor Cheng Man-Ching, known as The Professor, who introduced what is now the most prevalent Form of Tai Chi worldwide in NYC's Chinatown in the 1960s and 70s. Will is now one of Young's teachers and a certified Tai Chi Fundamentals® instructor. Will also leads weekly Tai Chi classes at First Church.



Soothing 2nd Hour Series

11AM in the Auditorium

Experience soothing spiritual practices to de-stress from the busyness of life, the election season, and your troubles.

Updated

FOUR sessions



OCT 27: Sound Bath Meditation with Lisa Cooper: an immersive, sensory experience of vibrational energy (sound) that elicits relaxation, shifting the state of the nervous system.



NOV 3: Taizé Singing Prayer with Craig Symons: short songs, repeated again and again, provide a meditative character aimed at praising God and drawing us deeper into relationship with the divine.



NOV 10: Tai Chi with Will Morrison: called "meditation in motion," gentle movement aimed to concentrate and balance the body's qi (vital energy), providing benefits to mental and physical health.



NOV 17: Guided Meditation with Derek Kolleeny: instructor's voice helps to focus on the present moment, producing stress relief, relaxation, improved focus and clarity, and enhanced emotional well-being.

Other Opportunities

Sung Compline Service
Oct 27 & Nov 10, 5-5:30 PM
Christ Church, Tomes-Higgins House

Tai Chi Drop-In Class
Mondays, 9:30 AM
First Church Auditorium

Yoga Class
Wednesdays, 4 & 5:30 PM
First Church Daniel Center

A moment of inner peace awaits.



THE GIVING TREE



The Giving Tree for H.O.M.E. and Pilgrim Towers is underway. The trees will be displayed with Christmas gift tags on Sunday November 10th and 17th.

You may also make your selections online via SignUp Genius by scanning the QR code. It will be available and live at 10 a.m. on November 10th.

All gifts should be returned to the stage in the auditorium before or after the 10 a.m. services on Sunday November 17th, 24th, or to the Harvest Sunday drive-by drop off on Sunday November 24th between 11.15 a.m. – 12.15 p.m.



Thank you in advance for making a holiday wish come true for a client of H.O.M.E in Orland, ME or a resident of Pilgrim Towers in Stamford, CT.



WIRED WORD BIBLE STUDY CONTINUES!

Join Pastor Patrick for lunch on Thursdays at noon in the lounge. Using the Wired Word curriculum, each week we'll discuss a topic or headline from the week's news and ask

ourselves how our faith applies through guided questions and discussion. Learn more at thewiredword.com. BYO lunch optional.

THE RUMMAGE ROOM

Shopping hours are Monday through Thursday from 11 a.m. until 3 p.m., with the same hours for donation drop off.

Needs this week are:

Vintage Christmas ornaments

Baby clothing - 0-12 months

Jewelry



PRAYER SHAWL MINISTRY



Can you knit a basic stitch? If so, please consider knitting a prayer shawl for our ministry. It will bless you and the recipient. The few stolen moments of knitting a few rows while saying a prayer to the future recipient is peaceful and uplifting, I promise.

Join us in creating these prayer shawls, knitting into them our prayers, love and support. These shawls are then distributed to those experiencing a crisis or loss – and truly are beloved. No expertise needed as we use very forgiving yarn, larger needles and one basic stitch.

We meet again on Wednesday November 20 at 7pm in Rick's Room of First Church. We can supply the needles and yarn. Contact Angela Stevens for more information. angelamessinastevens@gmail.com
Hope to see you soon!

THE CHAMBER PLAYERS OF THE GREENWICH SYMPHONY

First Church is proud to be the new home of one of two concerts each series in the coming season.

The next concert is TODAY at 3 p.m. –

Joseph Haydn (1732-1809) *String Quartet in B minor, Op. 33*

Felix Mendelssohn (1809-1847) *Piano Quartet No. 2 in F minor*

Anton Arensky (1861-1906) *Piano Trio No. 1 Op. 32 in D minor*

Tickets are Adult Season: \$100 - Student Season: \$15

Adult Admission (per concert): \$35 Student Admission (per concert) \$5

For full information, visit www.chamberplayersofthegso.org



FUTURES LAB COMING UP ON SATURDAY, NOVEMBER 16

Please see your Friday email blast for details to RSVP on SignUp Genius.

Futures Lab
Saturday, Nov. 16
10 a.m. – 2 p.m.
with Rev. Cameron Trimble
First Church Auditorium
Lunch and childcare will be provided.



- Working with Rev. Cameron Trimble,
we will take a voyage to the year 2070 and consider:
- What might be our probable future should we continue on a predictable course?
 - What is a desirable future?
 - What is the difference we hope we will be making in the world in 2070?



CONVERGENCE

CELEBRATE HARVEST SUNDAY NOVEMBER 24

DONATE SHELF STABLE FOOD FOR NEIGHBOR TO NEIGHBOR AND H.O.M.E.

We will also hold our traditional collection of shelf stable food during the 10 a.m. service on Harvest Sunday, November 24. Shopping bags will be available in the Meetinghouse on Sunday, November 10 and 17.

If you prefer, food may also be delivered to the drive-by drop off on Sunday, November 24 from 11:15 a.m. – 12:15 p.m. in the church parking lot.

Suggested food: Canned Meats, Peanut Butter and Jelly, Pasta and Sauce, Oatmeal, Rice, Beans, Canned Vegetables, Coffee, Tea

DONATE FRESH FOOD FOR NEIGHBOR TO NEIGHBOR



Use the online option to shop for fresh food donations from the comfort of your home. The fresh selections will be delivered for free to Neighbor to Neighbor. Scan the QR code to shop at GiveHealthy.org for fresh food donations requested by Neighbor to Neighbor.

HARVEST SUNDAY VOLUNTEERS - SIGN UPS NOW OPEN



Sign up to help receive donations at the drive by drop off on Harvest Sunday, November 24. The one-hour shift is short but the benefit to N2N and H.O.M.E. is long lasting!

58TH ANNUAL CHRISTMAS TREE & WREATH SALE VOLUNTEER SIGN UPS NOW OPEN



The 2024 Christmas Tree and Wreath Sale begins on Saturday, November 30th and runs through Sunday, December 8. Volunteers are the KEY to the success of the sale, which raised over \$50,000 for local charities last year. It is also a wonderful introduction to First Church for new residents in the community.

There are jobs for ALL volunteers - welcoming greeters, cashiers, and salespeople. Please sign up.

Help us help those in need and make First Church shine!

THE FIRST CONGREGATIONAL CHURCH OF GREENWICH

108 Sound Beach Avenue Old Greenwich CT 06870

203-637-1791 • www.fccog.org

Ministers - All Members Of The First Congregational Church Of Greenwich

Senior Pastor

Associate Pastor

Minister of Music

Director of FCCOG Church School/Regional Youth Ministry

Parish Nurse

Church Office Coordinator

Financial Administrator

Administrative and Communications Colleague

Livestream Director

Audio Technician

Database Administrative Assistant

PrayGround Supervisor

Facility Manager

Senior Sexton

First Church Preschool Director

First Church Preschool Administrative Assistant

Pastor Emerita

Reverend Patrick Collins

Reverend Cydney Van Dyke

Dr. Craig Scott Symons

Khaleigh Laicher

Susan Asselin, RN

Wendy Spezzano

Greg Girolamo

Carolyn Samuel

Daniel Lepoutre

Bob Small

Sue Wilder

Amalia Samuel

Julio Yika

Curtis Gay

Beth Genovese

Melanie Garnett

Reverend Sally Colegrove



UNITED CHURCH
OF CHRIST
a just world for all