

REACH Teams

Local

Community REACH Events Team – This team takes the church into the local neighborhoods. We combine food, fun, and the Gospel as we serve the community. The goal is to interact with the community in such a way that it opens the door for the gospel message. The world is in need of help and hope, so it is our job to bring it to them.

Kindness REACH Team – Our Kindness REACH team serves as the hands and feet of Jesus in our communities. Through intentional acts of kindness, from giving away bottles of water on a hot day to cleaning bathrooms in public spaces we show the love of Jesus in real and practical ways.

Digital REACH Team – The RFC Digital Reach Team is engaging the community through various digital formats. Whether it is creating and sharing daily devotional materials or sharing gospel focused posts or videos on social media, this team is taking the gospel to the people where they are.

Direct REACH Team – The Direct REACH team is focused on bringing the gospel to our communities. This team works along side the other REACH teams as well as being responsible for our Prayer Point Ministry.

Pro-Life REACH Team – This team goes beyond the 40 Days for Life and works year-round to meet the needs of mothers and babies. From sidewalk counseling to enabling abortion pill reversal to helping mothers with the needs of a new baby, this team is making a difference.

Prison REACH Team – This team is carrying the help and hope that is only found in Jesus Christ to those in local jails and prisons. Armed with the Gospel, the only hope for true and lasting life change, this team is not only reaching for those in prison, but their families as well.

National

ERN – Emergency Response Network
Responding to disasters, both natural and man-made, this team is bringing help and hope to those who find themselves facing unexpected circumstances. As we go, we are building a network of like-minded churches, empowering them to help not only their communities but other communities as well.



Scan here and **REACH** today

International

RockFish Church Philippines - RFC Philippines is a mission-driven church located just outside of Manila. Launched in April 2023, the church has quickly become a vibrant hub for young believers, with an average congregant age of around 26. Outreach is at the heart of RockFish Church. The congregation passionately engages in various local and regional missions, including feeding programs and support for orphans, widows, and the impoverished. This commitment to service and spreading the gospel is not just an activity but the core of their identity, creating a deep sense of unity and dedication among its members.

International Reach Team - RockFish Church is engaged in an ongoing effort to develop and establish international ministry partners. Do you have an international connection or a heart to help reach the world? Consider how you might be able to bring value to something so close to the heart of God.

ROCKFISH REACH

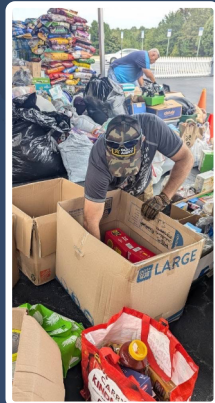
*Together, we will
make **Jesus** known.*

Why REACH?

RockFish REACH is a comprehensive outreach initiative designed to help carry the good news of Jesus Christ around the world. REACH offers local, national, and international opportunities to engage with Christ's mission to seek and save the lost. Our commitment to the "Great Commission" is the first step towards changing the world for Christ, start reaching today!

In Matthew 28:18-20, Jesus calls us to work with Him in transforming lives. Making disciples – wholly devoted followers of Jesus – is not an extra task, but a core duty for every Christian. At RFC, we champion this great commission of Christ, viewing every member as a minister of reconciliation through the Gospel's redeeming power.

Being equipped, encouraged, and engaged are fundamental keys to making disciples and fulfilling Christ's command. RFC desires to help you become everything that God has called you to be so that you can do everything God has called you to do.



myREACH

Every Christ follower has a responsibility to go into the world and make disciples (Matthew 28:19-20). At RockFish Church, we believe a major part of our mission is to equip you to do just that. myREACH includes practical ways to express your faith in your home, your job, and those who you connect with every day.

- Praying For Your Family, Friends, Co-Workers, And People You Connect With
- Inviting People To RockFish Events, REACH Events, And Services
- Sharing The Gospel
- Displaying RFC Signs And Decals

OurREACH

While we each have an individual responsibility to Reach others for Christ, we also have a corporate responsibility. There are some who we can only REACH effectively by Reaching together.

To this end, RockFish Church offers a variety of REACH opportunities to differing segments of the community. It is our goal to REACH every segment of our community with the help and hope that is only available through Jesus Christ.

- Table of Grace
- Camp Compassion
- Faith in Action Kindness REACH
- Kindness Explosions
- Community REACH Events
- Prayer Points

OurREACH defined

Table of Grace – Partnering with other organizations, Table of Grace provides a meal and a message to those in need. Meeting both physical and spiritual needs is the heart of this event.

Camp Compassion – This event takes the church into the places where those who lack traditional permanent housing have established camps. In addition to providing practical physical help such as food and clothing, we seek to bring the help and hope that is only found in Jesus.

Faith in Action Kindness REACH – These events provide the opportunity to share the love of Jesus in real and practical ways. Teams meet at the church and then go out into the community to engage in various activities from giving away reusable shopping bags to cleaning bathrooms. The goal is for our intentional acts of kindness to open the door for Gospel conversations.

Kindness Explosions – This is just like our Faith in Action Kindness REACH events but on a much larger scale. Partnering with other local churches, we can multiply our impact for the Kingdom!

Community REACH Events - These events take the church into the local neighborhoods. We combine food, fun, and the Gospel as we serve the community. The goal is to interact with the community in such a way that it opens the door for the gospel message. The world is in need of help and hope, so it is our job to bring it to them.

Prayer Points - Prayer Points are a great way to engage the community. All you have to do is simply set up the tent and then be present. Those that need help and hope will come to you. The key to a successful Prayer Point is consistency.