



THE EXPRESSION

FEBRUARY 2026 ~ NEWSLETTER

CHRIST'S LUTHERAN CHURCH
5330 Old Logan Ferry Road Murrysville, PA 15668
(412) 795-1212



Contact Us

Email: office@christsmurrysville.org
Website: christsmurrysville.org
App: Christ's Lutheran (ELCA)

Services

Saturday Evening – 6:00 pm
Sunday Worship – 10:00 am
Sunday School – 9:00 am

Interim Pastor Update

We are excited to provide a positive update about Council's progress in the hiring of a new intentional interim.

Rev. Sue Washburn has agreed to serve as our full-time pastor for 12 months with a start date of March 1st. Pastor Sue is a pastor in the Presbyterian Church in the USA, a full-communion partner with us in the ELCA. She has the confidence of her Presbytery and our Synod staff.



An intentional interim pastor is a specialist recommended by our Synod who helps Churches seeking a full-time Pastor maintain and strengthen their ministry, re-examine priorities, and support the Call Process for a new Pastor. Pastor Sue has led several local churches through their pastoral call processes and is excited to be working with us. She may look familiar as she has occasionally attended our Saturday evening services over the years.

Pastor Sue is looking forward to getting to know you and hearing your hopes and visions for the future of Christ's Lutheran Church. We ask for your continued prayers for our congregation, for this pastor, and for council. We will share more information about Pastor Sue as her start date approaches.

Thank you for your continued faithfulness, patience, and trust in God's guidance.

Our gratitude to Pastor Ed Sheehan and to Lay Pastors Jennifer Schaefer and Christine Weller for continuing to lead our services during this time of transition. And to Pastor Linda Theophilus for her ongoing support and service to our congregation.

In This Edition

Wake Up Call	page 2
Ash Wednesday Services	page 2
Together In Faith	page 4
Soup & Bread Luncheon	page 5
Our Prayer List	page 6
Annual Meeting	page 7
Dates To Remember	page 8
Souper Bowl Weekend	page 10
"Giving Up"	page 13

Ash Wednesday *Wake-Up Call*

“Remember that you are dust, and to dust you shall return.”

With these ancient words from Genesis 3:19 and the swipe of a dirty thumb across our foreheads, Ash Wednesday propels us into the season of Lent with the proper context to understand our lives as stewards of the riches God entrusts to us.

The essential teaching of Ash Wednesday – that we are just mortals, after all – crushes our ego, dispels our pretensions and drives us deep into God’s mysteries. Why are we here? What are our lives all about? What’s *really* important? Pray over these questions and profound insights emerge.

We are dust. Yes, but we are *God’s* dust. Our body consists of trillions of atoms, each one a speck of “dust” created by God, billions of years ago. God put us together from the very stuff of the universe.



- Therefore, we are quite literally “earthy” beings, made of the same material as air, water, soil and stone. Part of creation, we work to preserve and sustain the health of God’s creation for future generations.

- Therefore, we have reverence for our bodies, expressed through healthy living.

We are breath. We are “dust,” but not *only* dust.

We are “dust” into which God has “breathed the Holy breath of life” (Genesis 2:7).

continued on page 3

Ash Wednesday February 18th

“The cross,
with which the ashes are traced upon us,
is the sign of Christ’s victory over death.”

—Thomas Merton

Services at 1:00 pm and 7:00 pm
with communion
7:00 pm service will be livestreamed

Ash Wednesday *Wake-Up Call*

continued from page 2

- Therefore, every breath we take is holy. Every breath is a prayer that reminds us of God's life force in us.
- Therefore, we look to God to align our lives and ourselves with God's holy reality that arcs towards peace, love, joy, justice and truth.

Our time is brief. Because our "dust" will return to the earth, we live a finite number of minutes on earth.

- Therefore, every hour, every second is sacred. We spend our time wisely, carefully, prayerfully.
- Therefore, we do not cling to our possessions, knowing that we only hold onto them for a little while.
- Therefore, we nourish our lives with world treasures of real value – friendships, trust, love, joy, service, generosity and harmony.

This Lent, spend time in prayer, with openness and honesty. See how God will turn your heart and mind, transforming you into the person you were created to be. Reflect each day on Ash Wednesday. "Remember you are dust, and to dust you shall return."

Copyright © 2022, Rev. Robert Blezard. Reprinted by permission. Rob Blezard is web editor for the Stewardship of Life Institute and pastor of St. Paul's Lutheran Church, Aberdeen, MD.



Linda Theophilus, pastor at Emmanuel Lutheran Church in Penn Hills, is providing ***pastoral services to CLC members*** who request them.

To reach Pastor Linda, contact the church office at (412) 795-1212 or office@christsmurrysville.org.



Christ's Prayer Circle

Ann Rockette is our Prayer Circle Coordinator. You can reach Ann by phone at 412-334-9607 or 412-793-0108, or via her email at annrockett@aol.com, or

You can also send your prayer request through CLC's website or app—click on Connect on the top menu and scroll down to Prayer Request.



Do you want to be part of our ministry of prayer? Contact Ann to be added to the list of those notified of requests for prayers.



2026 offering envelopes are arranged alphabetically on the card table in the Entryway ready for pick up.

If your envelope box is not there, or you'd like to request

2026 envelopes, please contact the church office.

office@christsmurrysville.org 412-795-1212

Youth Group Meeting Sunday, February 1 @ 11am

Join us to plan activities and a service project for the coming months!





Together In Faith

The East Hills Cluster of Lutheran Churches is made up of six local congregations who participate in a shared ministry partnership, working together to coordinate efforts in Christian Education, Evangelism, Social Ministry, Stewardship, Youth Ministry, and more.

Christ's Lutheran, Murrysville

Good Shepherd Lutheran, Monroeville

Trinity Lutheran, Verona

Emmanuel Lutheran, Penn Hills (Eastmont)

St. John's Lutheran, North Versailles

Zion Lutheran, Penn Hills

By sharing together, the group is able to provide ministry which they may not be able to provide as individual congregations, and are actively seeking new opportunities to work together to bring God's love to our diverse and multi-cultural areas.

BIBLE STUDY FOR WOMEN

Normally meets the last Tuesday of the month from 1:00-2:30 pm at Zion Lutheran Church, 11609 Frankstown Road, Penn Hills 15235.

For the month of February, the Study will be on February 17th. For information, call the church at (412) 242-2626.

"Embracing our Neighbors in Love"

Interfaith Prayer Vigils at ICE Office

Every Friday, 8:30—9:30 am

3000 Sidney Street, Pittsburgh 15203

Monthly Book Club

Zion Lutheran on the third Monday of the month, 1:00-2:30 pm

Feb. 16	<i>Yukon Alone</i>	John Balzar
Mar. 16	<i>My Friends</i>	Fredrik Backham
Apr. 20	<i>Roll of Thunder, Hear My Cry</i>	Mildred D. Taylor
May 18	<i>Braiding Sweetgrass</i>	Robin Wall Kimmerer
Jun. 22	<i>The Light We Carry</i>	Michelle Obama
Jul. 20	<i>American Dirt</i>	Jeanine Cummins
Aug. 17	<i>The Paris Wife</i>	Paula McLain
Sep. 21	<i>Motherland</i>	Julia Ioffe
Oct. 19	<i>Mystic Tea</i>	Rea Nolan Martin
Nov. 16	<i>After the Last Border</i>	Jessica Goudeau

For information, call Zion Church at (412) 242-2626.



**SOUTHWESTERN
PENNSYLVANIA
SYNOD**
EVANGELICAL LUTHERAN
CHURCH IN AMERICA

Lutheran Disaster Response Trip
Camp Lutheridge: Asheville, NC

May 3-9, 2026

[Register by February 28](#)

Our Synod's Lutheran Disaster Response Team will be traveling for a second time for a week of mission work to help restore and rebuild communities across Western North Carolina affected by Hurricane Helene. This trip is open to adults (18 and over), all experience levels welcome! Cost will be \$200 per person; a deposit of \$100 will be collected at registration to secure your registration. Pastor Roger Steiner, trip coordinator, can be reached at 412-913-9391 for questions.



Soup & Bread Luncheon

Sunday, February 15, 11:00

Enjoy a variety of homemade soups, breads and desserts!

On the agenda:

- Presentation of Christ's Lutheran's 2025 Annual Report of financials and activities
- Looking ahead to 2026
- Recognition of Shrove Sunday

Confirmation Class

Teen Talk

New Way to explore life and Faith



**Sunday, February 1
6:00 pm**



CLC's 2025 Annual Report will be available in the Church Entryway beginning January 31, 2026

When Thrivent donors direct their Choice dollars through the Thrivent Choice program, eligible members can recommend where Thrivent Financial distributes some of its charitable outreach grant dollars among thousands of participating nonprofit organizations and congregations. **Christ's Lutheran is an eligible recipient.**

2025 Choice dollar allocations must be made by **March 31, 2026** or the allocations will expire unused. ***Please consider Christ's Lutheran as your designee.***



How to direct Thrivent Choice Dollars®

Online:

Step 1—Visit [Thrivent.com/thriventchoice](https://thrivent.com/thriventchoice).

Step 2—Click on "log in" at the top right of your screen and enter your MyThrivent user ID and password. (If you haven't registered on Thrivent.com, click on "register" to register.)

Step 3—Look for your designated Choice Dollars on the right side of the screen.

Step 4—Click on "Direct Choice Dollars" in the Thrivent Choice® box on your MyThrivent page.

Step 5—Search the catalog of organizations to find the organization you want to select.

Step 6—Click on "Direct Choice Dollars Now" to direct your designated Choice Dollars to benefit that organization.

For additional information, contact Erich Sill at 412-378-1051 or sillec@hotmail.com

Thank you!

By phone:

Step 1—Call 1-800-847-4836 and when prompted, say "Thrivent Choice."

Step 2—When prompted, say "Choice Dollars."

Step 3—Say or enter your Social Security number.

Step 4—Press 1 to direct Choice Dollars or press 2 to hear the Thrivent Choice program terms and conditions.

Step 5—A representative will then work with you to direct Choice Dollars.

Recommend where Thrivent Financial for Lutherans gives back!

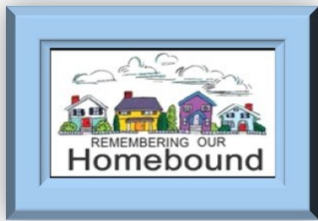
Directing Choice Dollars® is subject to the terms and conditions of the Thrivent Choice® program.
Visit [Thrivent.com/thriventchoice](https://thrivent.com/thriventchoice) for complete terms and conditions.





We kindly ask that you continue to pray for our Christ's Lutheran members, family and friends of members who we've included in our weekly prayer list:

Lindsey Boyer, Shirley Daum, Joel Erwin, Pearl Elliott, Lisa Homberg, Peggy Henry, Lisa Lehman, John Magnus, Derwood Montgomery, Evan Pavloff, Betty Reagan, Paul Rizzo, Lonnie Shurnia, Ron Spagna, Marianne Trainor, and Sue Werner



We continue to remember people who have been faithful partners in ministry for many years, but who are now homebound. Please include Janet Beall, Gail Byrne, Shirley Daum, Bob DeCecco, Robin DeCecco, Marlene Gerdes, Dick & Genny Harvanek, Peggy Henry, John & Gertrude Laughrey, Jeff Pope, Fred Sr. & Barbara Salenske, Ron Spagna, Marianne Trainor, Michael & Sue Werner and Donna Yoder in your prayers.

We ask for continued prayers for family and friends of Kraige Cutler, Bertha DeCecco, Norma Delligatti, Bill Farrell, John Heilman, Walter Luniewski, Audrey Mauro, Jack Pfaff, Tom Replogle, Donna Shaffer, Patti Smith and Helen Sward



Anne Rockette is our Prayer Circle coordinator. You can reach Ann by email: annrockett@aol.com (please indicate on the subject line that it relates to the prayer circle), through CLC's website or app (click on Connect on the top menu and scroll down to Prayer Request) or phone Ann at 412-334-9607.



As you look at the prayer list this month, please let the Church Office know of any changes or updates that should be made: office@christsmurrysville.org



WE PRAY FOR OUR CHURCH MEMBERS AND FRIENDS

THE WEEK OF:

February 1st

Jesse, Kayla, & Ayden Stafford
Elizabeth Stahl
Joe & Jackie Stempfer
Jim & Peggy Stuckert

February 15th

Barth & Carol Tamenne
Aaron Tamenne
Laura Tamenne
Marianne Trainor

February 8th

Tricia & Bryce Sukel
Marion Surgent
Amy Sweeney, Samantha, & Zachary Cooper
John, Lisa, Alana, & JJ Tensuan

February 22nd

Sandy Thompson
Alex Thompson
Tressa Usher & Family
Wally Utley

CHURCHCOUNCIL

Kim Boyer, President
Carl Lingelbach, Member
Natalie Kuehn, Member
John Schultz, Member

Carol Tamenne, Vice President
George Meade, Member
Joyce Perrone, Member
Sandi Shaffer, Member

Barb & Dave Hall, Treasurer
Bela Molnar, Financial Secretary

Linda Paulovich, Congregation Secretary

COUNCIL HIGHLIGHTS

December 18, 2025

- As of the end of November, there was a General Fund deficit of \$4,880. With \$0 balance in the General Fund, we are now using Emergency Funds to meet everyday operating expenses.
- The deficit for the year is now \$27,000.
- Carol Tamenne reported that pastors/lay pastors have been secured for all weekends through the end of February.
- Discussions are underway with a pastor to serve as CLC's interim pastor for a period of one year. If contracted, it's anticipated that she will start with CLC in March.
- The update of Christ's Lutheran Church's Constitution and the project to update CLC's database and membership role are temporarily on hold.
- Council thanked outgoing Council member and president Barth Tamenne for his service as a leader and his commitment to Christ's Lutheran.
- Election of Officers: Kim Boyer was elected to the office of President; Carol Tamenne was elected to the office of Vice-President.
- Kim Boyer will continue as chair of the Congregational Life Team and George Meade will continue as chair of the Support Team. Barth Tamenne will continue as chair of the Outreach Team until the end of the year, to provide continuity until a new chair is identified.



**Sunday
February 15
11:00 am**

**homemade soups,
breads and cookies
will be served**

*Sign-up on the sheet in the Church Entryway to
help provide the food.*

Dear members of Christ's Lutheran Church,

Thank you so much for the kindness and friendship in these last 13 years. It was truly an honor to serve as your pastor in these times of dramatic change in the Church.

Thank you, also, for the time of fellowship that you hosted to celebrate my retirement and for the generous gift that you shared. May God continue to bless and guide you as you move forward together in faith.

Pastor Wayne

FOOD & FELLOWSHIP TO START YOUR DAY

Men, join us on the second Saturday of each month at 8:30 am for a traditional breakfast and fellowship.



Our February breakfast will be held on **February 14th** at 8:30

am in the downstairs social hall.

Come hungry for food and fellowship!

MAKE NOISE FOR MISSION!

February 7th and 8th



We celebrate the first weekend of each month with the donation of your loose change to benefit **our sister church**, Trinity

Lutheran on the North Side. Collection cans will be located on the offering table and up front by the baptismal font.

So, gather up your change and let's all make some **NOISE!!!**

Stitched With Love

If you enjoy knitting and crocheting, or would like to learn, our stitching group meets Tuesdays from 9 to 11 am in the downstairs social hall.



We make hats for cancer patients, baby blankets, prayer shawls, and other needed items. Or bring your own project to work on. It's a time to be creative & enjoy one another's fellowship. For information, contact Leslie Sill at nonnasill@comcast.net.

Reminder Corner

Feb 1 st	11:00 am	Youth Group Meeting
Feb 1 st	6:00 pm	Confirmation Class
Feb 3 rd	9:00 am	Stitched With Love
Feb 7 th & 8 th		"Souperbowl" Weekend Noise for Mission Wknd
Feb 10 th	9:00 am	Stitched With Love
Feb 10 th	6:30 pm	Worship & Music Comm
Feb 11 th	9:00 am	Property Comm Meeting
Feb 12 th	9:30 am	Caring Hearts & Hands
Feb 14 th	8:30 am	Men's Breakfast
Feb 14 th & 15 th		Little Pantry Wknd
Feb 15 th	11:00 am	Annual Congregational Meeting & Luncheon
Feb 17 th	9:00 am	Stitched With Love
Feb 17 th	10:00 am	Congregation Life Team
Feb 17 th	10:00 am	Outreach Team Meeting
Feb 17 th	6:30 pm	Support Team Meeting
Feb 18 th	6:30 pm	ASH WEDNESDAY
Feb 19 th	6:30 pm	Council Meeting
Feb 24 th	9:00 am	Stitched With Love
Feb 28 th	11:00 am	Ladies' Brunch

Sunday School
9:00 AM



**For
Children and
Adults**

Feel free to join a class anytime!

NexTrek Recycling Challenge 2026

THANK YOU for recycling your plastic bags. The Trex company has changed their collection program in 2026, and we will be updating you soon about their new rewards system. Currently, we will continue to collect bags for Trinity Lutheran.

As a reminder, here is a chart of acceptable **clean and dry** plastic bags (no plastic containers): All plastic must be clean, dry, and free of food residue.



In December, the Caring Hearts and Hands group of volunteers enjoyed preparing food, packing it in Christmas decorated boxes and delivering it to 22 appreciative recipients.

The volunteers also provided Christmas cookies that were packed in Christmas boxes and delivered, one box to each home. We thank CLC's youth group for the cookies that they baked and contributed to the cookie boxes!



Now we turn our attention to the February Valentine's Day box lunches! This time there will be items reflecting the Valentine's Day theme including heart shaped cookies. We will meet on Thursday, February 12th in the downstairs fellowship hall at 9:30 AM to pack and deliver the boxes.

Through cards, phone calls and visits, we keep in touch with everyone on the Caring List whether they choose to get a meal or not. Please let us know if you, or someone you know, could benefit from our caring mission. If you have any questions, contact Romaine Miller at 412-996-4915.

Leave Your Legacy

Are you considering a special gift or an estate gift to Christ's Lutheran Church?

Gift planning services are available at no cost to you through the services of the ELCA



Foundation and our Regional Gift Planner, Ryan Ebner.

Ryan can assist you with establishing a comprehensive estate plan that may include bequests, a charitable gift annuity, gifts of appreciate assets, a charitable remainder trust or whatever gift you'd like to make that provides for your family and the ministries you care about.

See the "Legacy and Special Gifts" brochure in the rack outside of the office for more information. You can contact Ryan at (814)-823-3285 or ryan.ebner@elca.org.

February 14th & 15th **CHRIST'S LITTLE PANTRY weekend!**

Are you, or someone you know, experiencing food insecurity?

If you need food, "Take what you need."

If you have extra food to share, please "Leave what you can."

THANK YOU – THANK YOU – THANK YOU ... to everyone who has been contributing to the success of our Little Pantry. We're so grateful to all who continue to donate. The food goes quickly and we have been attempting to replenish the pantry daily.

As food insecurity continues, variety is important in choosing the items to donate to the Little Pantry. For now, please focus on cereal and other breakfast items, complete pancake mixes (made with water), syrup, peanut butter, jelly, soup, tuna & other canned meats, fruit (canned or in individual packs), lunchbox foods and baby food. Please remember that our Little Pantry may provide the only food a family has to meet its needs — protein is very important.

When you bring your donations to the church, you can put your items directly into the Little Pantry or leave them in the grocery cart in our entryway.

You can also support the Little Pantry with a cash donation that's clearly marked, "Little Pantry."

NOTE: We recently learned that we need to have special permits from the State and Health Department to put any type of fresh food (fruit, veggies, eggs, potatoes, etc.) into the pantry. Your generous gifts of canned and boxed items continue to change the lives of individuals and families in our community. Thank you!

Please continue to support this ministry, knowing that your generosity will help families right here in the Plum & Murrysville area. **Let's work together to keep our Little Pantry full every week!**



"Souper" Bowl weekend



February 7 & 8

When the big game rolls around, we'll have two soup pots out, one for each team. Bring your soup donations or your checkbook to **vote for the team you know is going to win.**

One soup can or check equals one vote!

We'll tally up the results and see how our predictors did, but the big Souper Bowl winner will be our Little Pantry.

We don't know who's playin' but we're ready!

Ladies Brunch

Saturday, January 24th 11:00 – 1:00

Ladies of the church - Please join us for food & sistership on the **4th Saturday of each month** for all of us to enjoy our time together.



Any tasty treat you'd like to share is appreciated.

Kindly register so we know how many to prepare for:

- Register on our website
[January Ladies' Brunch](#)
- RSVP on our app
- Sign-up on the sheet in the entryway

We look forward to seeing you!

REMINDER:

Our church's exterior doors are locked at the beginning of services.



Qualified Charitable Distributions (QCD's)

Did you know those over age 70 1/2 can withdraw funds federally tax free from Retirement Accounts such as IRAs through a Qualified Charitable Distribution?



The withdrawal is made payable directly to the qualified charity by the IRA custodian and counts toward any federal annual

Required Minimum Distribution.

Contributions made through QCD's are an available vehicle to support Christ's Lutheran Church's mission while reducing personal income subject to federal taxes.

Talk with your financial planner to learn more.



Weekend Worship Team

to our worship assistants, greeters, ushers, all who set up and clean up for the services, reconcilers, and the tech Team who offer their time and talents to make our worship services go smoothly.

If you would like to join our Weekend Worship Team, you can sign up using the app: Click on "Join a Weekend Worship Team"



Or using the following link or QR code.

[CLC Weekend Worship Team](#)

If you have any questions, please contact the church office.

Thank you to all who help to make our weekend worship services possible!

THANK YOU for your donations to CLC's Ronald McDonald House pull tab project!

We're collecting aluminum tabs for Ronald McDonald House. Working with a local recycler, pop tabs from soda cans, soup cans, pet food, and other canned goods are turned into money to support RMHC's mission.

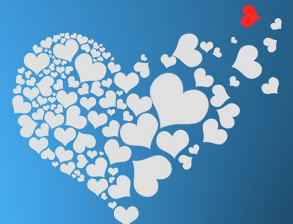


Ronald McDonald House®

That money helps RMHC provide comfort, care and support for families with children who are sick.

You can help by depositing tabs you collect in the container in the church Entryway.

Happy
Valentine's
Day



Champion Dog Earns Title at CLC



The amazing and exciting training of dogs in Scent Work (odor detection) for sport is a regular event at CLC! Westmoreland County Obedience Training Club of Delmont (WCOTC-dogs.com) put on TWO detective trials at our church in 2025 -- in January and then again in July. The trials were very successful with many of those in attendance complimenting our beautiful and gracious church. Then in December, we held a fun Christmas Party for the scent work dogs. For the Christmas party, dog owners donated poinsettias to complement the backdrop for photos of the dogs. Ultimately, those poinsettias adorned our church Christmas altar. Each of the trials resulted in donations to CLC for a total of \$600. We plan to continue keeping this furry ministry alive and growing!

On Saturday January 17, 2026, the Westmoreland County Obedience Training Club held a fantastic double AKC Scent Work - Detective Trial at our church. Even the snow and chilly temperatures couldn't stop these dogs and their human partners.

For those not familiar with AKC Scent Work, Detective Trials are the highest level of the scent work sport. The searches need to incorporate interior and exterior spaces, any number of which can be blank with no odor, to try to mimic actual detection work. Our searches can be between 7-15 minutes long and the space must be between 2,000 - 5,000 square feet!

At this level, which is very difficult, dogs are required to pass trials 10 TIMES with no errors! Dog owners travel all over to participate in trials, working toward 10 perfect trials. At the trial held at CLC in January, one dog achieved her 10th error-free trial and now has the lofty title of Scent Work Master. Her owner, Lauren Weidner, is a sister Lutheran and was so happy for her dog, Tasia, to earn the title at a Lutheran church!

Lauren is an active member of Zion Lutheran Church in Turbotville PA. Tasia has been very ill at times recently and Lauren almost lost her last January. Prayers were answered when the vets turned her around. Lauren thought they would never obtain the detective title, even though Tasia is very good at it. And such a sweet blessing to achieve it at a Lutheran Church!

If you are ever interested in learning more about scent work for fun, sport or as a springboard for other types of odor detection, please email or call Joyce Perrone JPerrone.JP@gmail.com or 412-849-7750.



*"The dog is the most faithful of animals and would be much esteemed were it not so common.
Our Lord God has made His greatest gifts the commonest." — Martin Luther*

A Different Take on "Giving Up" For Lent

At Lent, Christians traditionally give up something they like to eat, drink, do, or smoke, to name a few popular self-denial commitments.

But there are other options for "giving up" as we commemorate our Lord's 40 days in the desert as he began His earthly ministry. To add to your commemoration of Lent, or to begin now or at any time, consider these disciplines that may not be as obvious as the popular things people usually give up, but can result in a more fulfilling season of Lent:

We can give up our time. We can give up our free time and spend more time with Jesus, in His word, or in serving others. This can be a genuine sacrifice, because for many today there is little free time.

We can give up control of our words to Jesus. This is hard for us because we want to speak first, to give our opinion. For Lent we can give up our words so we can listen carefully to others.

We can give up feelings of resentment. It's easy to build up resentments toward people you work with, family members, friends and even situations. During Lent, you can work toward letting go of anger and resentment. This can be a hard one, but remember Jesus sees your efforts.

Spend time alone with Jesus, as He did with His Father in the desert. Ask Him what He wants you to give up. Obey Him faithfully, and your Easter rewards won't be relief that your abstinence is over, but a closer walk with your Savior.

courtesy of Effective Church Communications

DEADLINES:



♦ **Monthly Newsletter:**
on or before the 20th
of each month.

♦ **Weekly Bulletin:**
by end-of-day on
Wednesdays.

Information must be
submitted ready to print
by deadlines posted.



office@christsmurrys ville.org
or drop off at the office.

Thanks for your submissions.

CONTACT US

Monday 9 am - 12 pm &
12:30 pm - 2:30 pm

Tuesday 9 am - 12 pm &
12:30 pm - 2:30 pm

Wednesday **closed**

Thursday 9 am - 12 pm &
12:30 pm - 2:30 pm

Fridays 9 am - 12 pm &
12:30 pm - 2:30 pm

Please call before coming to the church to
be sure someone is available to help.

office@christsmurrys ville.org

412-795-1212



For our February 2026 Calendar, follow this link:

[Christ's Lutheran Church 2026 Calendar](#)

When you reach the bottom of the list, click on
the right arrow to see more events!

