



Regular school attendance is crucial for your child's learning and wellbeing. Open communication with the school is essential. Early intervention helps prevent prolonged absence. Support to help your child attend school regularly is available if you need it. Please do not hesitate to seek our assistance.

Summary of our Attendance Management Plan

In line with the government's target of 80% of students regularly attending school by 2030:
Our school target is: We're currently at:

80% ← **66%**

Regular attendance¹
by Term 4, 2026

Regular attendance
in 2025

This target is set out in our school's **Annual Implementation Plan**.

Our **Attendance Policy** sets out

- Why attendance is a priority for our school
- Legal requirements about attendance
- Our expectations of students, parents and our school staff

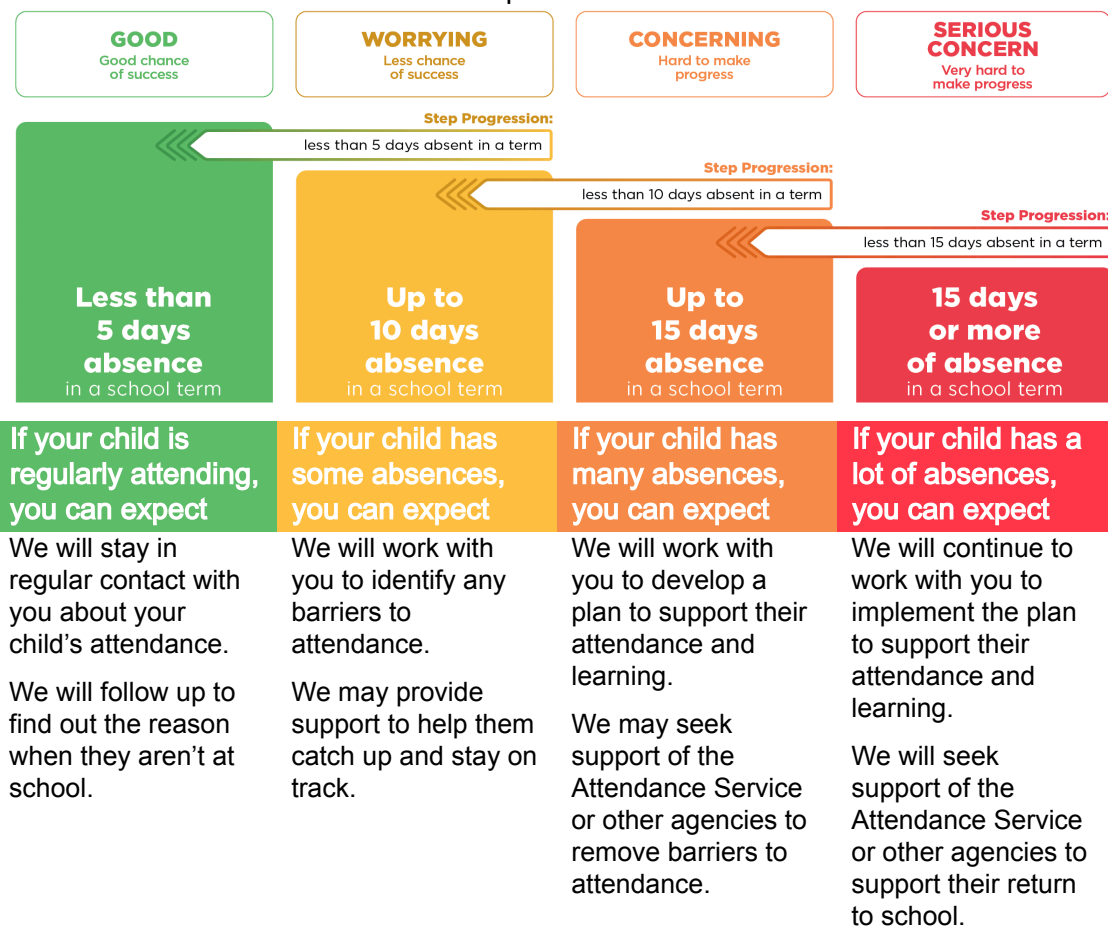
Our **Attendance Procedures** set out

- How we manage attendance in our school
- How we identify concerning attendance
- How we respond to absences

Our school's **monitoring and assurance process** sets out

- How we monitor and review the impact of our actions
- How we give the Board assurance that the school is managing attendance effectively

Our school uses the [Stepped Attendance Response \(STAR\)](#) to guide when and how we respond to absences.



¹ "Regular attendance" means attending more than 90% of a term, or 9 days in a fortnight